

Geomorphological Analysis of San Nicola Island (Tremeti Islands, Southern Adriatic Sea). Results from the 2021 and 2022 Environmental Geomorphology Field Camps of the MSc in Geological Sciences and Technologies of Earth and Planets (University "G. d'Annunzio" of Chieti-Pescara)

Valerio Piattelli¹, Jacopo Cinosi¹, Gianluca Esposito¹, Vania Mancinelli¹, Giorgio Paglia¹, Sarah Ciaglia¹, Paride Colasante¹, Davide Defflippis¹, Federica De Iure¹, Sepino Desiderio¹, Lorenzo Dezio¹, Flavio Di Cecco¹, Benedetta Di Cesare¹, Nicola Di Croce¹, Jacopo D'Intino¹, Davide Di Zio¹, Vanni Donatelli¹, Diana Faieta¹, Marco Gagliardi¹, Christian Giuliani¹, Lorenzo Innamorato¹, Alessio Luciani¹, Pietro Mantanera¹, Lisa Molaro¹, Alessandro Montebello¹, Pierluigi Moschella¹, Joelle Pica¹, Giovanni Santucci¹, Matilda Soldano¹, Daniele Spedalieri¹, Sara Stricca¹, Paolo Trollo¹, Chiara Troisi¹, Giuseppina Varisco¹, Mario Zeppa¹, Marcello Buccolini¹, Enrico Miccadei¹

¹ Department of Engineering and Geology, Università degli Studi "G. d'Annunzio" Chieti-Pescara, Environmental Geomorphology and GIS Laboratory, Via dei Vestini 31, 66100 Chieti Scalo (CH), Italy
² Holder of the educational activities of the Environmental Geomorphology field mapping course (MSc in Geological Sciences and Technologies of Earth and Planets, Department of Engineering and Geology, University "G. d'Annunzio" of Chieti-Pescara)
³ Corresponding author: enrico.miccadei@unich.it

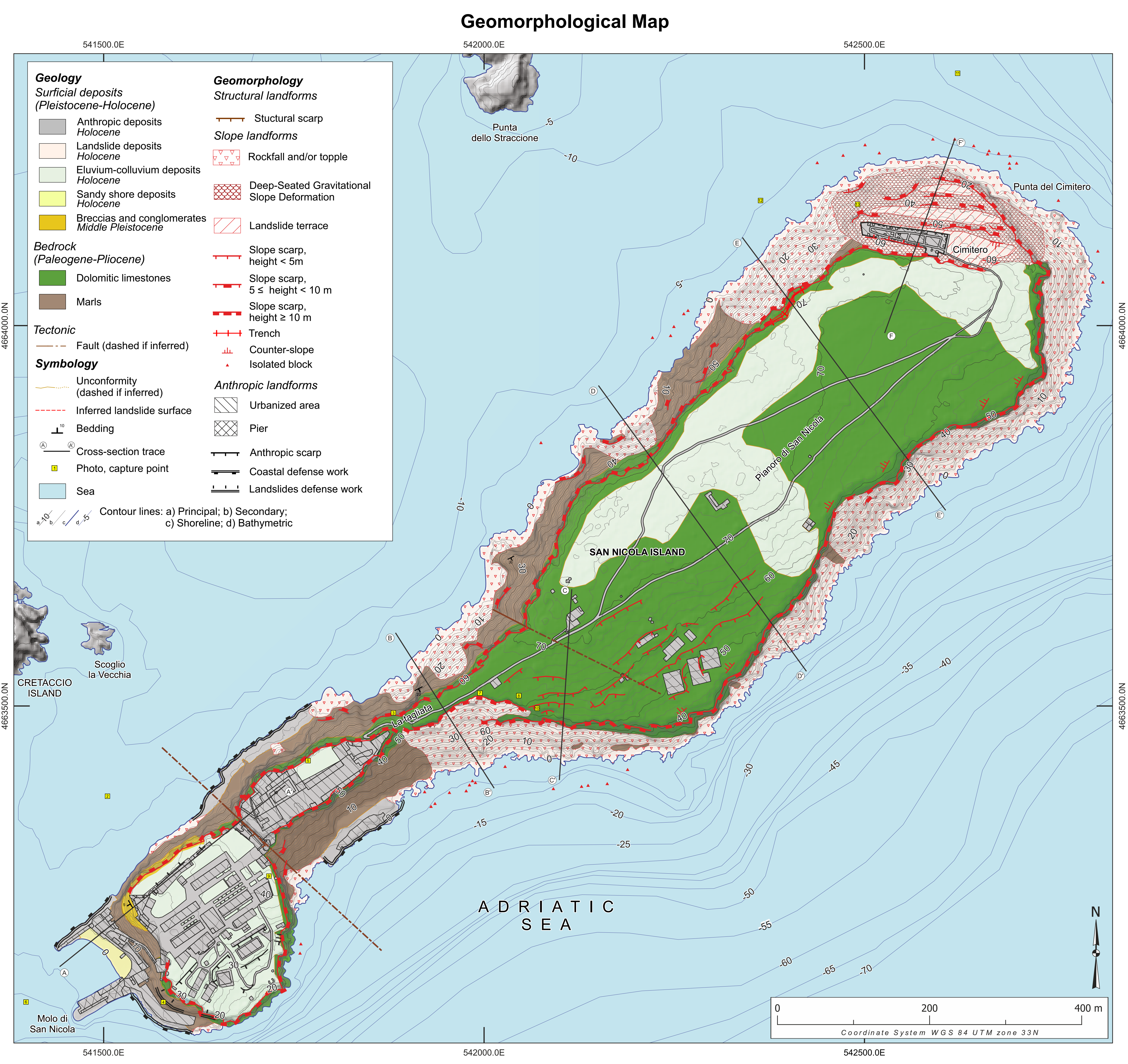
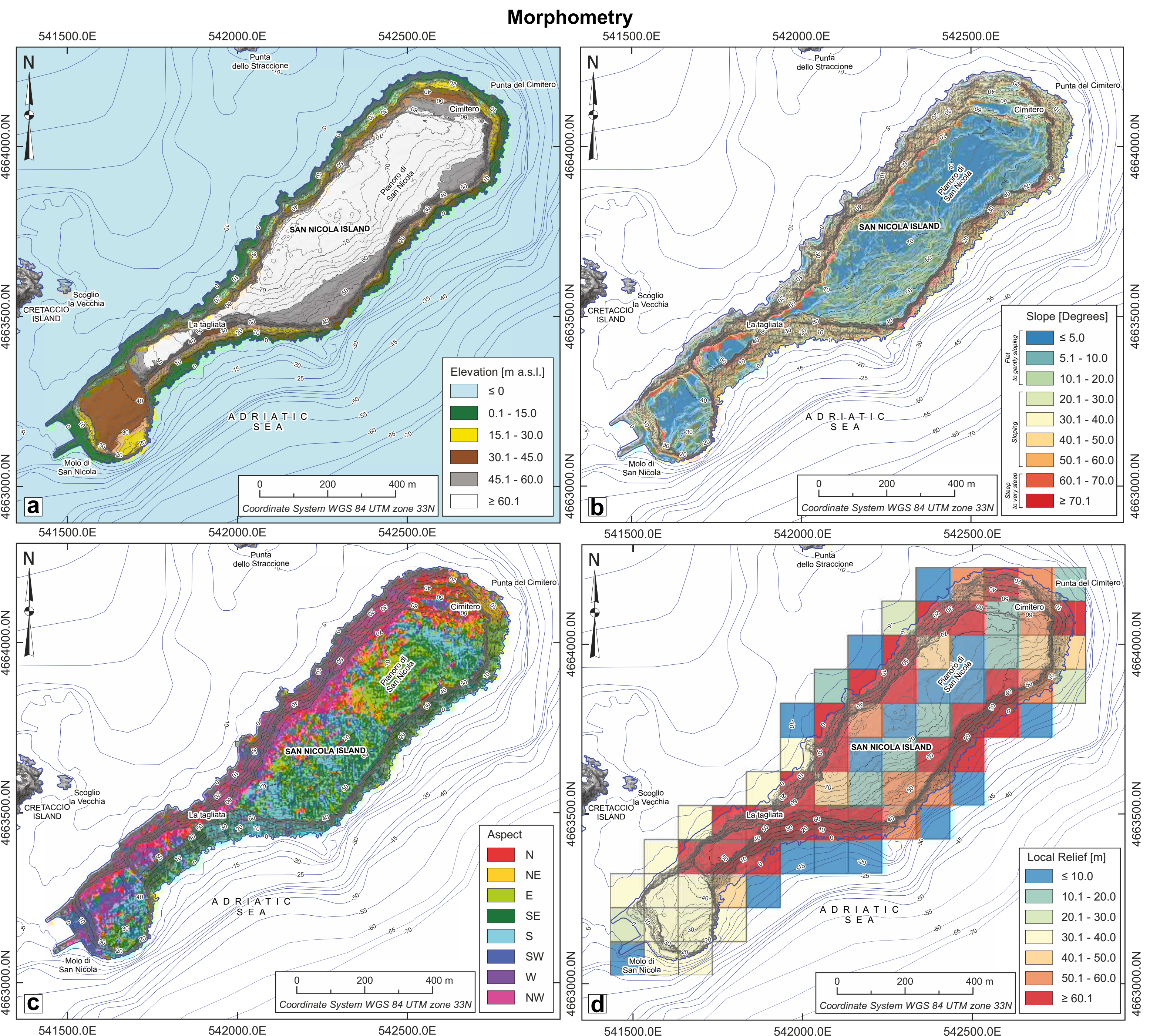
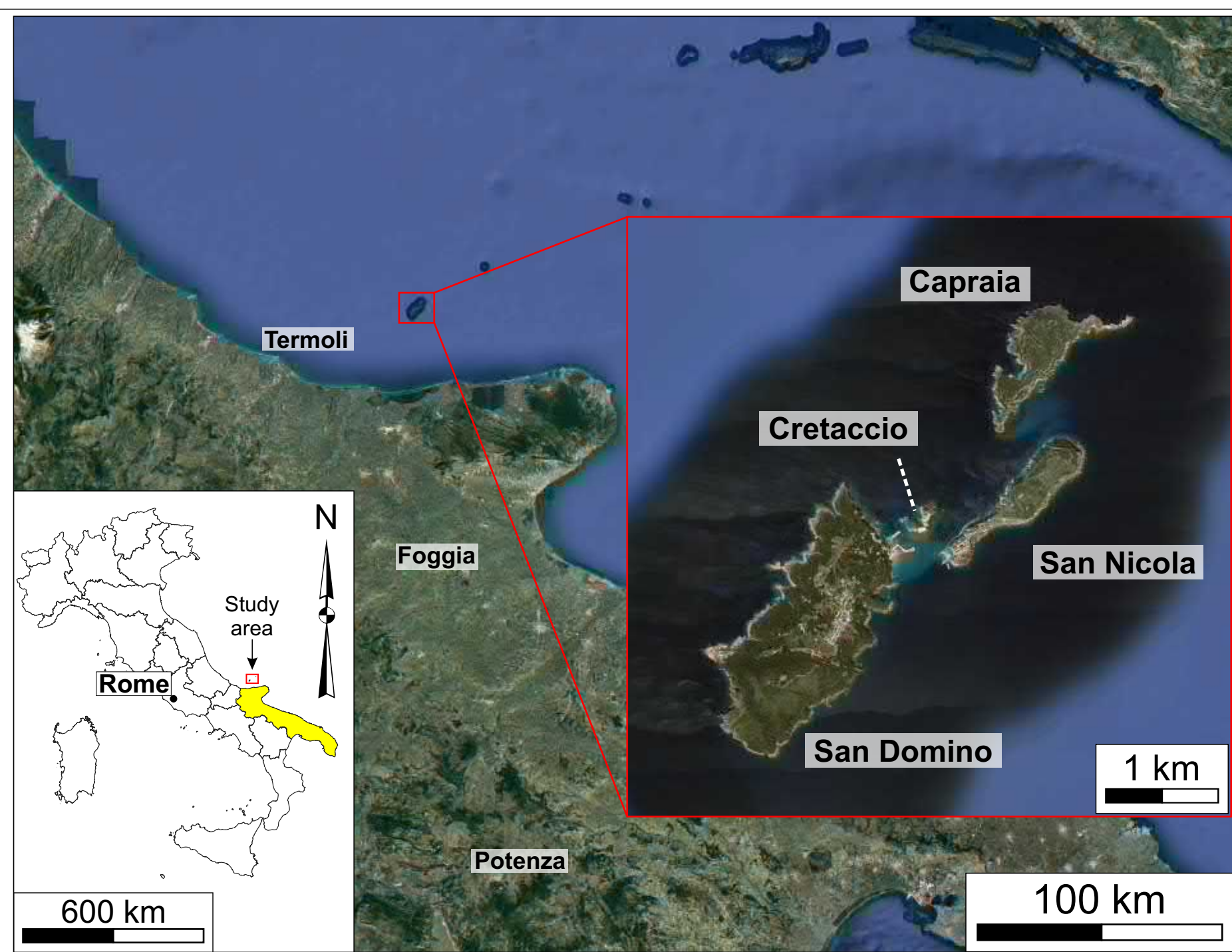
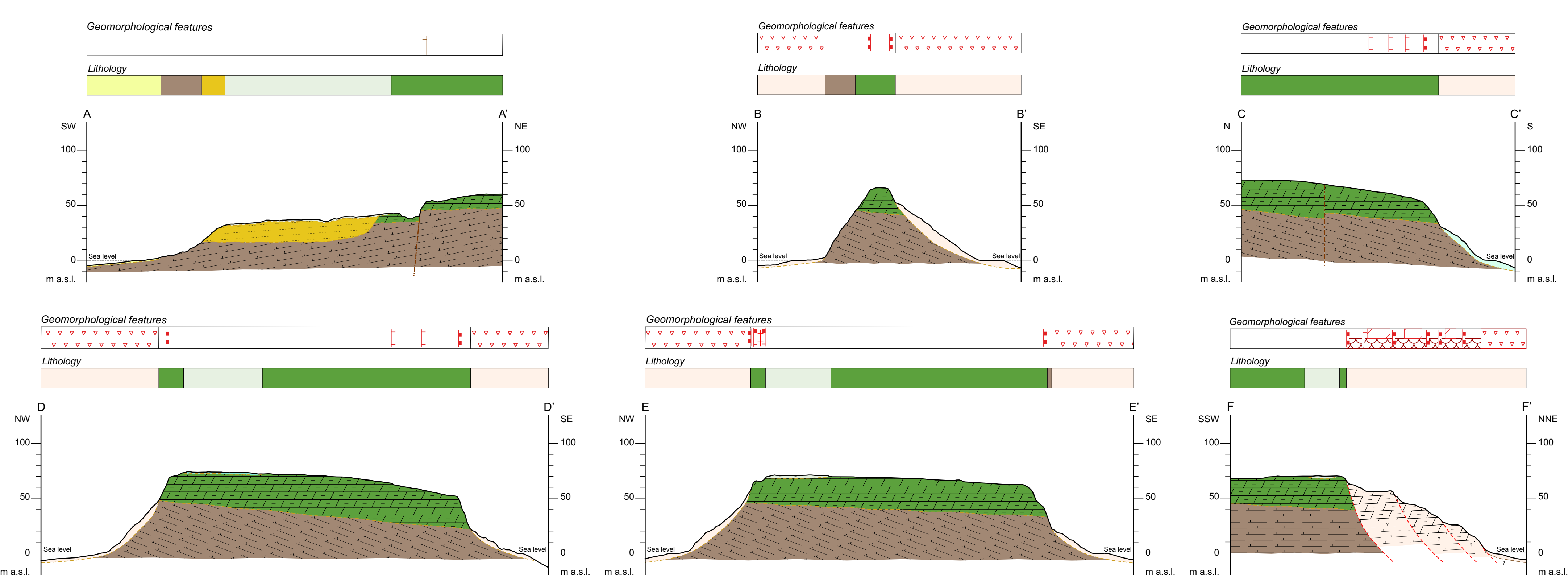


Photo documentation of San Nicola Island geomorphological features



1) Panoramic view of San Nicola Island, acquired from the port of San Domino Island. 2) Outcrop of breccias and conglomerates lying above the marly bedrock. 3) North-western flank of San Nicola Island showing the marine succession constituted by gently SE-dipping marly deposits unconformably overlain by sub-horizontal dolomitic limestones; rockfall deposits are visible at the base of slopes. 4) Particular of a marly outcrop showing a high macrofossils content. 5) Anthropic deposits constituted by meter-sized blocks. 6) Sandy shore deposits. 7) & 8) Complex landslide East of *La tagliata*. 9) South-eastern flank of San Nicola Island with rockfall deposits covering the marly succession. 10) Sub-vertical open fracture set on dolomitic limestones with NE-SW direction. 11) & 12) Panoramic view of the *Punta del Cimiero* deep-seated gravitational slope deformation, with clearly visible slope scarps and landslide terraces. 13) Unstable block.

Geomorphological Cross-sections



Acknowledgment: The authors wish to thank the Cartographic office of the Puglia Region (<http://www.sit.puglia.it>) for providing the topographic data. Bathymetric countour lines were interpolated from Piano Nautico n. 204 - Isole Tremiti and Pianosa (Istituto Idrografico della Marina Militare). LIDAR data are provided by Ministero della Transizione Ecologica (<http://www.mite.gov.it/>).