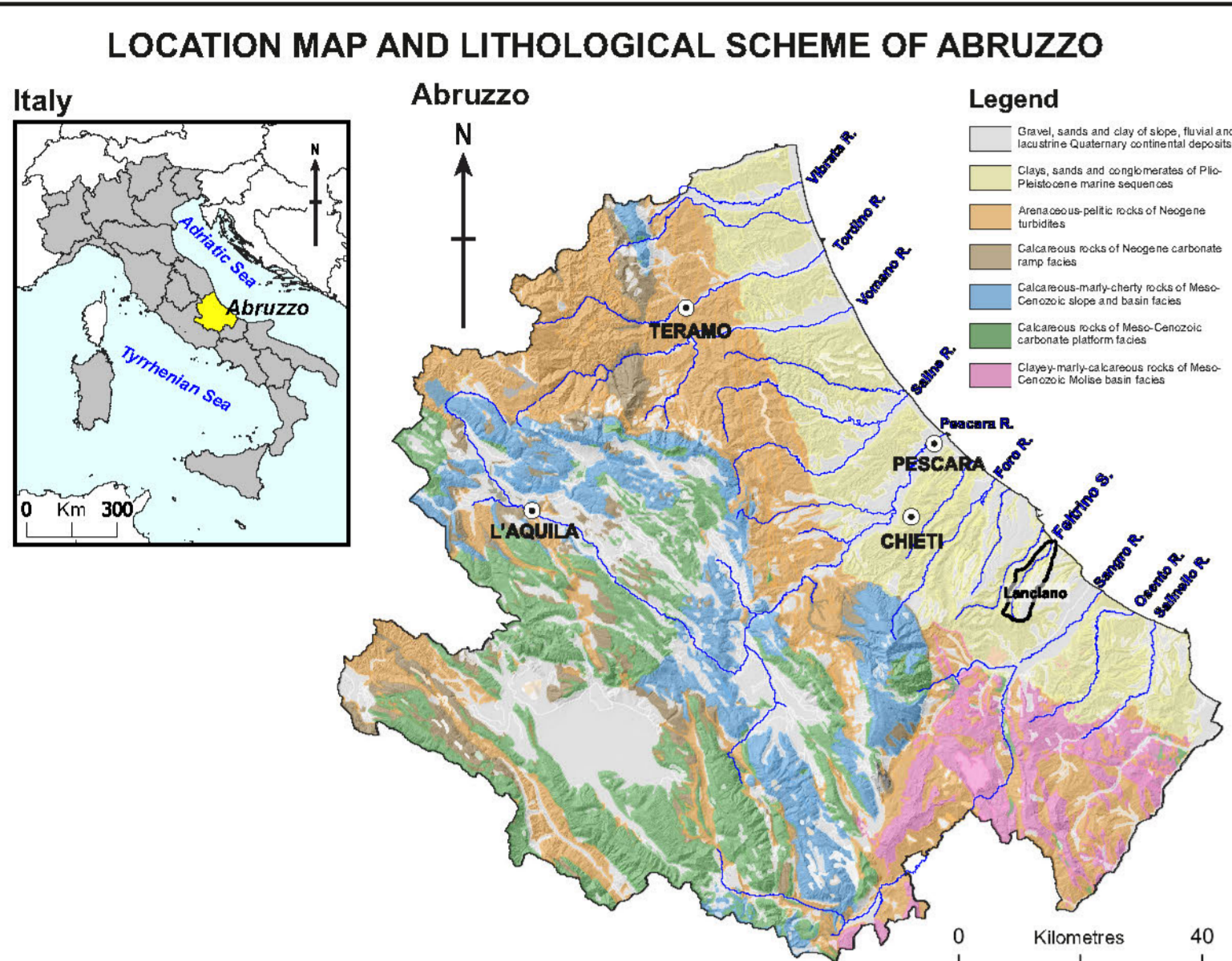
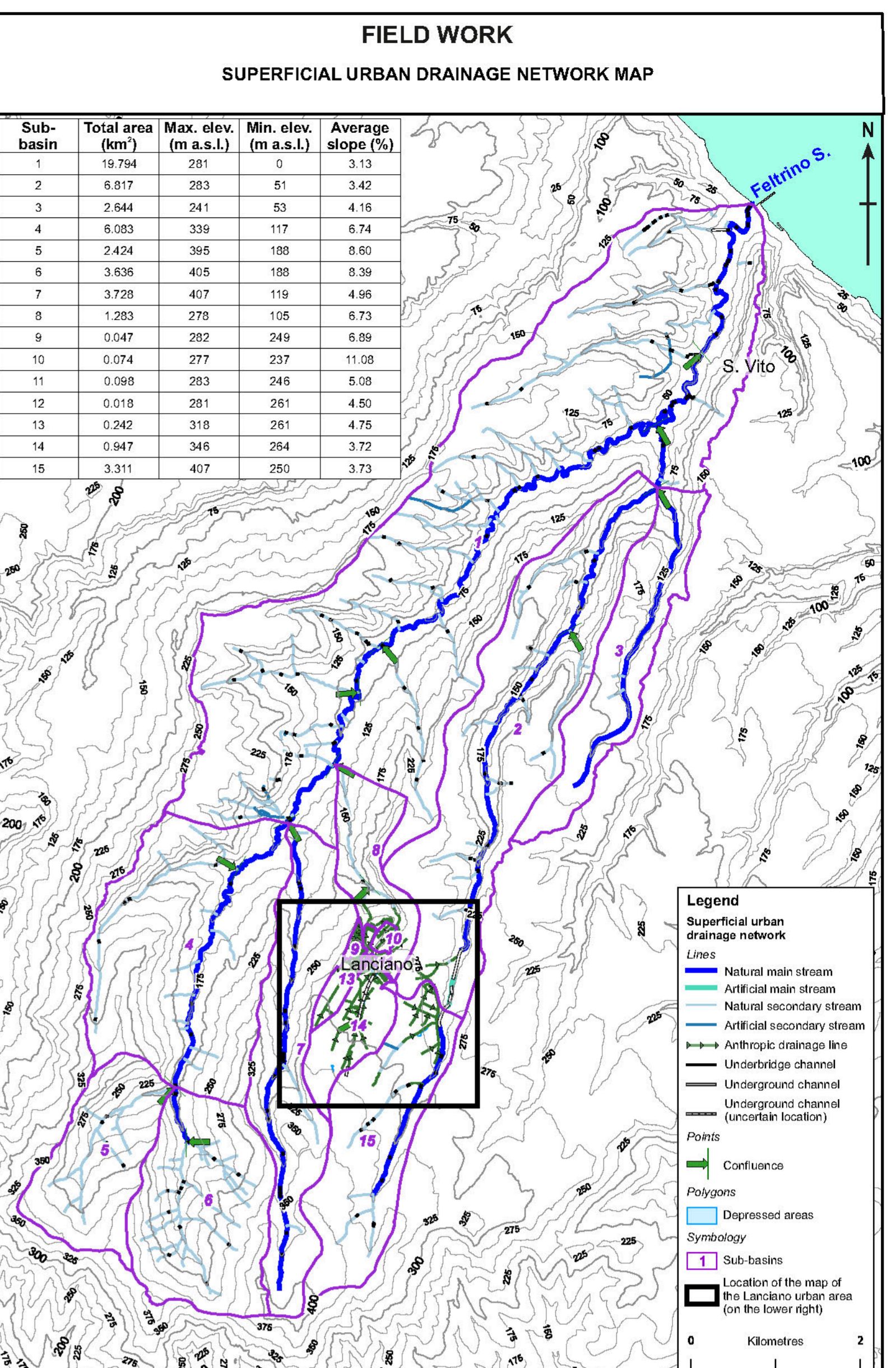
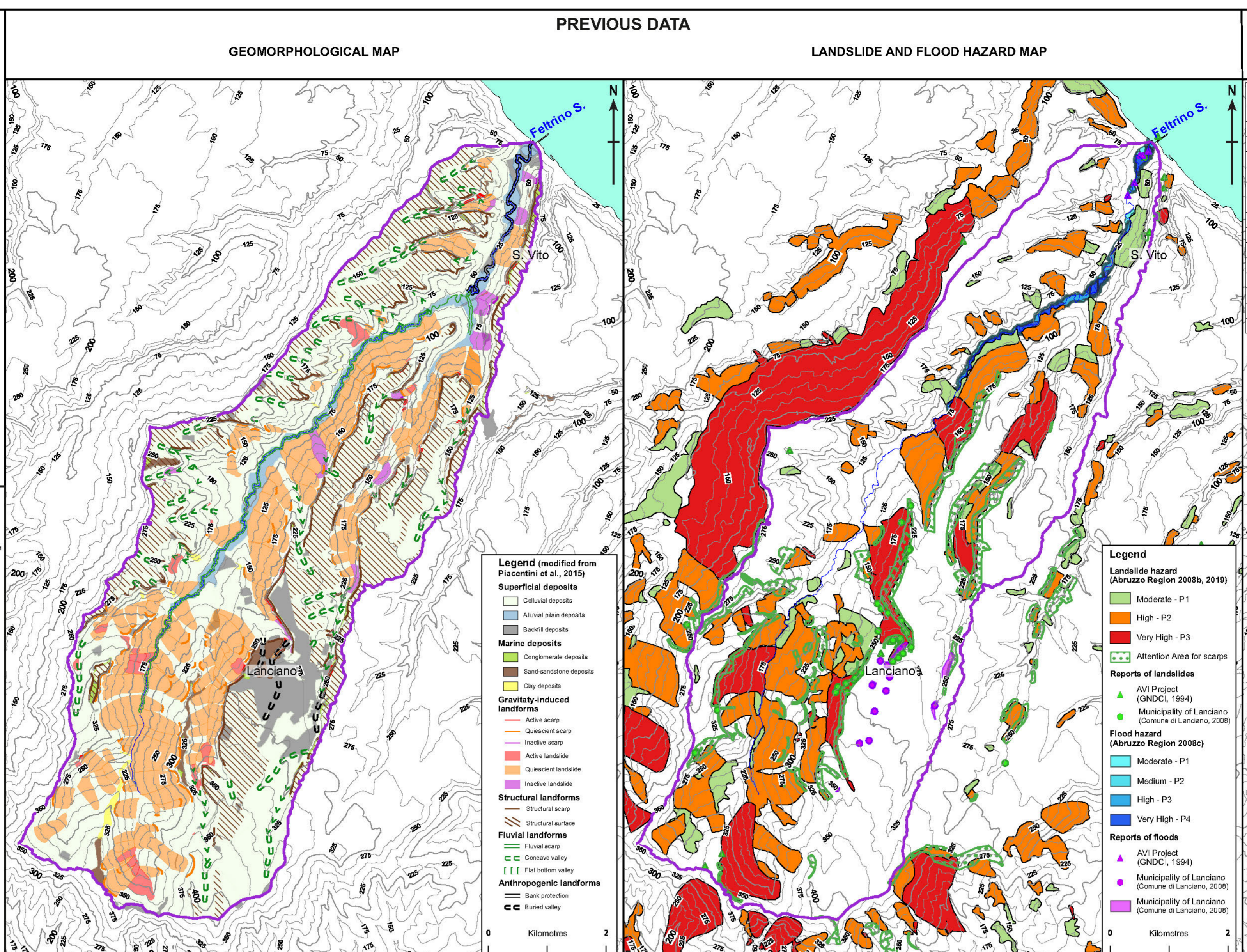


GEOMORPHOLOGY OF LANDSLIDE-FLOOD-CRITICAL AREAS IN HILLY CATCHMENTS AND URBAN AREAS FOR EWS (FELTRINO STREAM AND LANCIANO TOWN, ABRUZZO, CENTRAL ITALY)

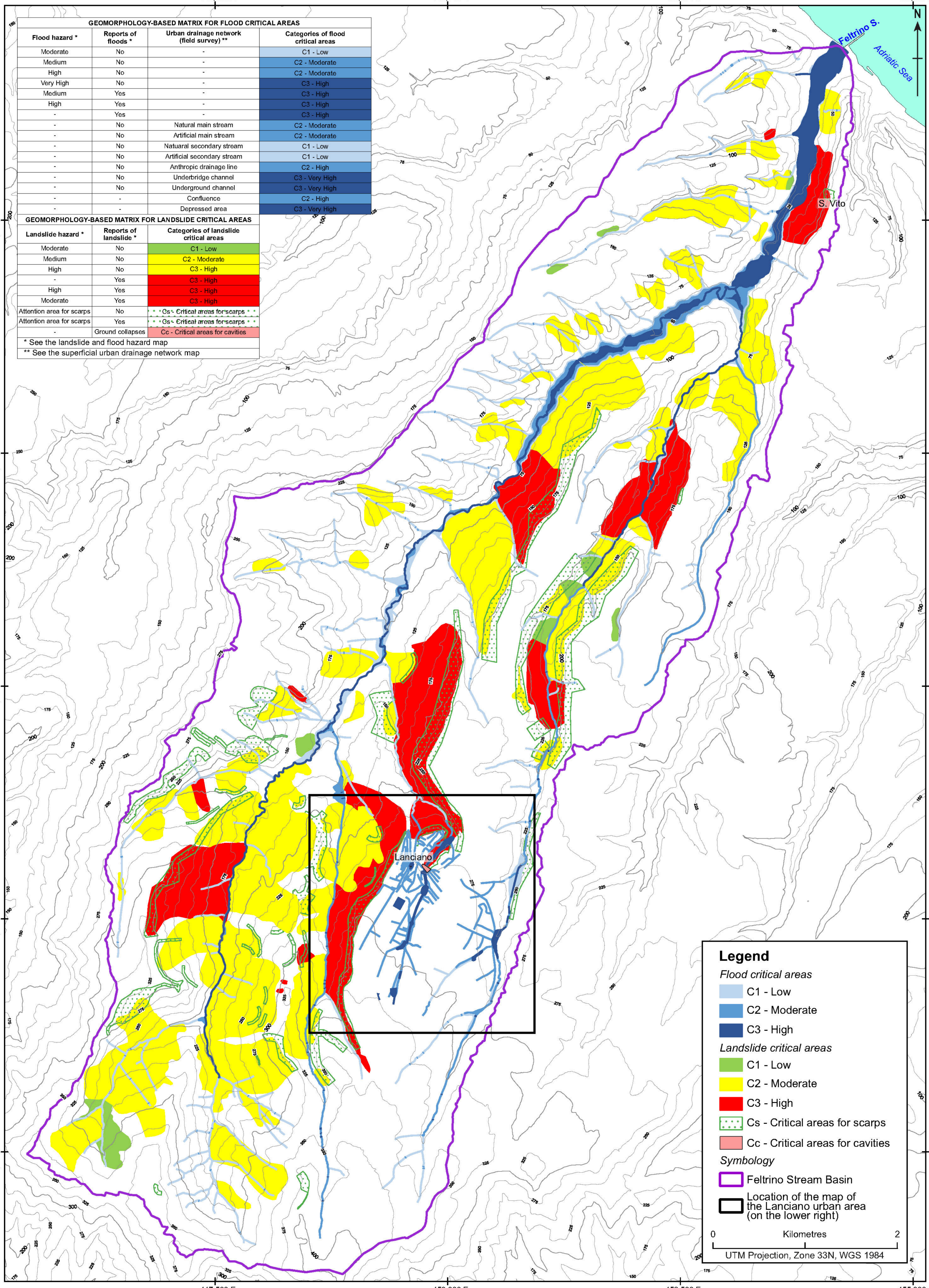
Cristiano Carabella*, Fausto Boccabella*, Marcello Buccolini*, Silvia Ferrante*, Alessandro Pacione*, Carlo Gregori*, Tommaso Pagliani*, Tommaso Piacentini*, Enrico Miccadei*

* Department of Engineering and Geology, Università degli Studi "G. d'Annunzio" Chieti-Pescara, Laboratory of Tectonic Geomorphology and GIS, Via dei Vestini 31, 66100 Chieti (CH), Italy
 * Municipality of Lanciano, Piazza Plebiscito, 59, 66034 Lanciano (CH), Italy
 * Environmental Conflict Documentation Center, CDCA Abruzzo - APS, Piazza Principe di Piemonte 11, 66030 Frisa (CH), Italy
 * AeCtech, Viale Maestri Del Lavoro 15, 02100 Rieti (RI), Italy
 * SASI SpA, Zona Industriale 5, 66034 Lanciano (CH), Italy

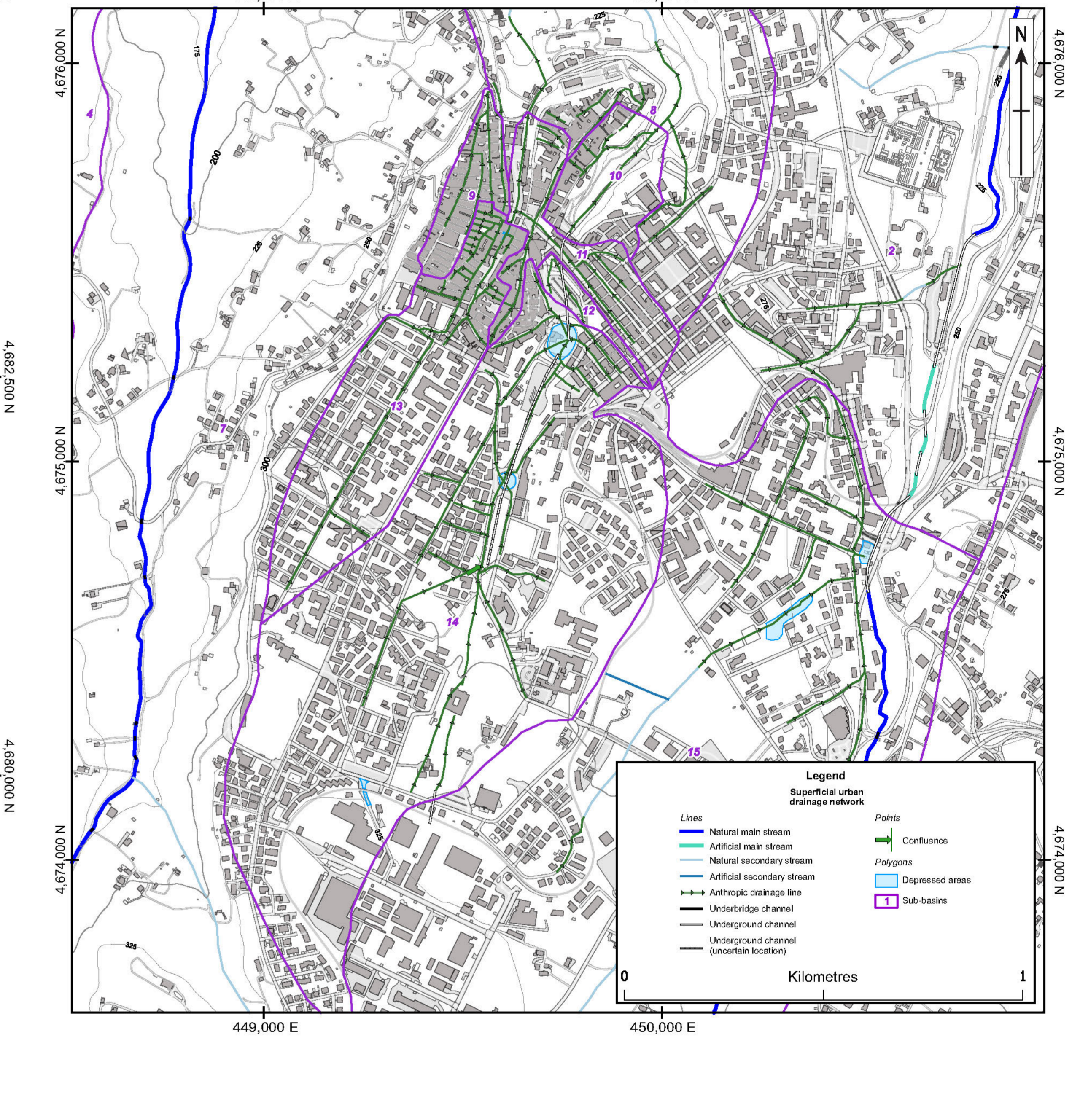
*Correspondi author: cristiano.carabella@unich.it



LANDSLIDE AND FLOOD CRITICAL AREAS OF THE FELTRINO STREAM BASIN



SUPERFICIAL URBAN DRAINAGE NETWORK FOR THE URBAN AREA OF LANCIANO



LANDSLIDE AND FLOOD CRITICAL AREAS FOR THE URBAN AREA OF LANCIANO

