

## RESEARCH ARTICLE

10.1002/2016JE005181

## Key Points:

- New viscosity data for Mercury northern volcanic plains lavas are presented
- Mercury lavas show shear thinning behavior with a decrease of viscosity of  $\sim 1$  log unit as shear rate ( $\dot{\gamma}$ ) varies from 0.1 to 5.0 s<sup>-1</sup>
- Heat loss during lava flow and emplacement implies that high effusion rates,  $>10,000$  m<sup>3</sup>/s, are required to cover large distances as observed by MESSENGER (NASA)

## Supporting Information:

- Supporting Information S1
- Figure S1
- Table S1

## Correspondence to:

F. Vetere,  
francesco.vetere@unipg.it

## Citation:

Vetere, F., S. Rossi, O. Namur, D. Morgavi, V. Misiti, P. Mancinelli, M. Petrelli, C. Pauselli, and D. Perugini (2017), Experimental constraints on the rheology, eruption, and emplacement dynamics of analog lavas comparable to Mercury's northern volcanic plains, *J. Geophys. Res. Planets*, 122, doi:10.1002/2016JE005181.

Received 26 SEP 2016

Accepted 20 JUN 2017

Accepted article online 22 JUN 2017

# Experimental constraints on the rheology, eruption, and emplacement dynamics of analog lavas comparable to Mercury's northern volcanic plains

F. Vetere<sup>1</sup>, S. Rossi<sup>1</sup>, O. Namur<sup>2,3</sup>, D. Morgavi<sup>1</sup>, V. Misiti<sup>4</sup>, P. Mancinelli<sup>1</sup>, M. Petrelli<sup>1</sup>, C. Pauselli<sup>1</sup>, and D. Perugini<sup>1</sup>

<sup>1</sup>Department of Physics and Geology, University of Perugia, Perugia, Italy, <sup>2</sup>Institut für Mineralogie, Leibniz Universität Hannover, Hannover, Germany, <sup>3</sup>Department of Earth and Environmental Sciences, KU Leuven, Leuven, Belgium, <sup>4</sup>Istituto Nazionale di Geofisica e Vulcanologia, Rome, Italy

**Abstract** We present new viscosity measurements of a synthetic silicate system considered an analogue for the lava erupted on the surface of Mercury. In particular, we focus on the northern volcanic plains (NVP), which correspond to the largest lava flows on Mercury and possibly in the Solar System. High-temperature viscosity measurements were performed at both superliquidus (up to 1736 K) and subliquidus conditions (1569–1502 K) to constrain the viscosity variations as a function of crystallinity (from 0 to 28%) and shear rate (from 0.1 to 5 s<sup>-1</sup>). Melt viscosity shows moderate variations (4–16 Pa s) in the temperature range of 1736–1600 K. Experiments performed below the liquidus temperature show an increase in viscosity as shear rate decreases from 5 to 0.1 s<sup>-1</sup>, resulting in a shear thinning behavior, with a decrease in viscosity of  $\sim 1$  log unit. The low viscosity of the studied composition may explain the ability of NVP lavas to cover long distances, on the order of hundreds of kilometers in a turbulent flow regime. Using our experimental data we estimate that lava flows with thickness of 1, 5, and 10 m are likely to have velocities of 4.8, 6.5, and 7.2 m/s, respectively, on a 5° ground slope. Numerical modeling incorporating both the heat loss of the lavas and its possible crystallization during emplacement allows us to infer that high effusion rates ( $>10,000$  m<sup>3</sup>/s) are necessary to cover the large distances indicated by satellite data from the Mercury Surface, Space ENvironment, GEochemistry, and Ranging spacecraft.

## 1. Introduction

The eccentricity of the orbit of Mercury, in combination with the planet's vicinity to the Sun, is responsible for its very long days ( $\sim 59$  terrestrial daytimes) and, locally, extremely high surface temperatures. The daylight temperature at perihelion, estimated on the surface at the equator, is  $\sim 700$  K, whereas it decreases to  $\sim 350$  K at 85°N. During the night, the lack of a shielding atmosphere produces a high loss of thermal energy due to radiation and temperature decreases to  $\sim 100$  K [Paige et al., 1992; Vasavada et al., 1999].

The surface of Mercury is dominated by a secondary volcanic crust, the majority of which formed between 4.2 and 3.5 Ga [Head et al., 2011; Weider et al., 2012; Denevi et al., 2013; Byrne et al., 2016], with minor explosive volcanic activity until  $\sim 1.0$  Ga [Thomas et al., 2014]. Geochemical mapping using the X-Ray Spectrometer (XRS) and Gamma-Ray Spectrometer (GRS) of the Mercury Surface, Space ENvironment, GEochemistry, and Ranging (MESSENGER) spacecraft [Solomon et al., 2001] revealed that the volcanic crust is Mg-rich and Al- and Ca-poor in comparison with terrestrial and lunar crustal material [Nittler et al., 2011; Weider et al., 2012, 2015; Peplowski et al., 2015]. Mercury's crust is also strongly depleted in Fe [Izenberg et al., 2014; Weider et al., 2015]. This is most likely due to extreme partitioning of iron into the core [Hauck et al., 2013] during early differentiation of the planets under highly reducing conditions (IW-3 to IW-7 with IW being the iron-wüstite oxygen fugacity buffer) [Malavergne et al., 2010; McCubbin et al., 2012; Zolotov et al., 2013; Namur et al., 2016a]. The extremely high sulfur contents measured by MESSENGER (1–3 wt % [Weider et al., 2015]) can also be explained by differentiation under reducing conditions [Namur et al., 2016a], as sulfur solubility in silicate melts increases with progressively reduced oxygen fugacity conditions [McCoy et al., 1999; Berthet et al., 2009; Zolotov et al., 2013; Cartier et al., 2014; Namur et al., 2016a].

**Table 1.** Electron Microprobe Analyses of the Starting Material Compared to Literature Data<sup>a</sup>

	This Work (wt %)	SW-2015				
		SD	Enstatite bas	NVP	NVP-Na	IcP-HCT
SiO <sub>2</sub>	61.48	0.36	55.06	57.10	55.02	53.30
TiO <sub>2</sub>	0.36	0.01	0.18	0.96	0.89	0.89
Al <sub>2</sub> O <sub>3</sub>	8.95	0.11	13.07	15.27	14.88	12.31
FeO	–	–	0.29	3.61	2.88	3.31
MnO	–	–	0.14	0.25	0.25	0.23
MgO	14.12	0.21	19.72	16.53	13.59	22.53
CaO	6.81	0.09	12.37	4.95	4.29	6.29
Na <sub>2</sub> O	8.85	0.21	0.04	0.29	6.25	0.16
K <sub>2</sub> O	0.21	0.02	0.08	0.31	0.22	0.19
Tot	100.78		100.95	99.27	98.27	99.21
NBO/T	0.89		1.00 <sup>a</sup>	0.64 <sup>a</sup>	0.68 <sup>a</sup>	1.05 <sup>a</sup>
			–	0.50 <sup>b</sup>	0.55 <sup>b</sup>	0.86 <sup>b</sup>
			–	0.41 <sup>c</sup>	0.53 <sup>c</sup>	0.79 <sup>c</sup>

<sup>a</sup>The starting composition represents an average of 50 measurements on the synthetic starting glass material. SW-2015 refers to literature data presented in *Sehlke and Whittington* [2015]. SD refers to the standard deviations. The NBO/T values (nonbridging oxygens (NBO) per tetrahedrally coordinated cation (T) [*Mysen and Richet*, 2005]). NBO/T values for *Sehlke and Whittington* [2015] chemical compositions refer to calculation results considering (a) ferrous only, (b) ferrous and ferric, and (c) ferric only.

The largest effusive events on Mercury occurred at the highest latitudes of the northern hemisphere and are represented by lavas with the highest SiO<sub>2</sub> and Al<sub>2</sub>O<sub>3</sub> contents and the lowest MgO contents detected on the planet [*Weider et al.*, 2015; *Namur et al.*, 2016b]. These lavas belong to a single smooth plain deposit referred to as the northern volcanic plains (NVP) [*Weider et al.*, 2012; *Denevi et al.*, 2013], which was dominantly formed between 3.7 and 3.5 Ga 2011 [*Head et al.*, 2011; *Weider et al.*, 2012; *Ostrach et al.*, 2015; *Byrne et al.*, 2016] and covers ~6% of the surface of the planet [*Denevi et al.*, 2013]. A notable characteristic of this geological sector of Mercury is that it contains well-preserved lava flows with a low crater density. Some of these flows can be followed for distances exceeding 100 km [*Byrne et al.*,

2013; *Hurwitz et al.*, 2013], making them extremely useful to gain a better understanding of the dynamics of magma emplacement on planetary surfaces, in general, and on Mercury in particular. Another distinct feature of these lava flows is their very high Na<sub>2</sub>O (up to 8 wt %) [*Peplowski et al.*, 2014, 2015], which have been explained by 15–30% melting of a plagioclase-bearing ilherzolitic mantle source [*Namur et al.*, 2016b; *Vander Kaaden and McCubbin*, 2016] and low Al<sub>2</sub>O<sub>3</sub> contents, responsible for the low viscosity of the lavas [*Charlier et al.*, 2013; *Sehlke and Whittington*, 2015].

Several authors have investigated the nature of lavas constituting the NVP through morphological and compositional analyses [*Head et al.*, 2011; *Ostrach et al.*, 2015; *Weider et al.*, 2015], mineralogical analysis [*Namur and Charlier*, 2017; *Vander Kaaden et al.*, 2017], flow modeling [*Byrne et al.*, 2013], and rheological measurements of analog lavas [*Sehlke and Whittington*, 2015]. The origin of such large lava flows and their lateral extent are controversial and may be due to the low viscosity of the lava [*Stockstill-Cahill et al.*, 2012] and/or very high effusion rates [*Head et al.*, 2011; *Ostrach et al.*, 2015; *Sehlke and Whittington*, 2015; *Namur and Charlier*, 2017]. However, to the best of our knowledge, there is presently no work that takes into consideration the possible variation of heat loss of the lava and its relationship with effusion rates.

In order to better understand the mechanisms of lava emplacement in the NVP, we provide new viscosity measurements using synthetic material with a composition that has been estimated using the most recent XRS and GRS data from MESSENGER [*Weider et al.*, 2015; *Peplowski et al.*, 2015] (Table 1). Viscosity measurements were performed at both superliquidus and subliquidus temperatures, at varied shear rates, and are combined with numerical models in order to propose a hypothesis for the rheological behavior, eruption, and emplacement dynamics of NVP lavas. We propose that the formation of very large lava flows may adequately be explained by a combination of low viscosity (10–20 Pa s) and high effusion rate (>10,000 m<sup>3</sup>/s). In particular, we show that the effusion rates necessary to produce NVP lava flows are comparable to those observed in large igneous provinces (LIPs) on Earth, which could be consistent with the formation of NVP lavas by adiabatic decompression of the mantle source [*Namur et al.*, 2016b]. Our work also shows the critical effect of low Al<sub>2</sub>O<sub>3</sub> and high Na<sub>2</sub>O contents on lava rheology, and we believe that accurately measuring these elements and their variability across the planet should be a priority target of the BepiColombo mission [*Benkhoff et al.*, 2010].

## 2. Starting Materials and Experimental Techniques

The elemental compositions of NVP lavas were obtained from XRS (normalized to Si) and GRS measurements and presented by *Nittler et al.* [2011], *Weider et al.* [2012, 2015], and *Peplowski et al.* [2014, 2015]. They were recalculated by *Namur et al.* [2016b] on an oxide basis. These authors combined individual maps of Mg/Si, Ca/Si, Al/Si, and S/Si and only calculated chemical compositions for pixels for which those four ratios were available assuming that the sum of major oxides is 100 wt %. The main advantage of this method is that Si contents do not need to be arbitrarily fixed [*Vander Kaaden and McCubbin*, 2016]. According to *Peplowski et al.* [2014, 2015], Na<sub>2</sub>O is high in NVP lavas. Consequently, *Namur et al.* [2016b] used a Na/Si ratio of 0.20, similar to the average Na/Si ratio of NVP lavas presented by *Peplowski et al.* [2014]. This procedure resulted in the acquisition of a large compositional range for NVP lavas spanning from 55 to 66 wt % SiO<sub>2</sub>, 8 to 20 wt % MgO, 3 to 9 wt % CaO, and 9 to 16 wt % Al<sub>2</sub>O<sub>3</sub> [*Peplowski et al.*, 2015; *Weider et al.*, 2015; *Namur et al.*, 2016b].

As reported by *Nittler et al.* [2011] and *Weider et al.* [2015], Mercury's surface contains high abundances of sulfur (1–3 wt %). Sulfur solubility in silicate melts increases with decreasing oxygen fugacity [*Berthet et al.*, 2009; *Cartier et al.*, 2014; *McCoy et al.*, 1999; *Namur et al.*, 2016a]. Oxygen fugacity during mantle melting and volcanic eruptions on Mercury is traditionally considered as being between IW-2 and IW-7 [*McCubbin et al.*, 2012; *Zolotov et al.*, 2013] although new models show that most lavas were formed at IW-5.4 ± 0.4 [*Namur et al.*, 2016a]. Therefore, the potential effect of sulfur on the rheology of Mercurian lavas might need to be considered. However, it was demonstrated that S has a very minor effect on the polymerization of silicate melts and, hence, on their rheology [*Morizet et al.*, 2015]. In addition, NVP lavas contain the lowest S contents among Mercurian magmas (0.5 to 2.7 wt % S with a median value of 1.64 wt % [*Namur et al.*, 2016a]). Therefore, in this study we consider that sulfur plays a minor role in modulating the physical properties of NVP lavas.

According to the above considerations, for this experimental study, we prepared a S-free representative composition of NVP lavas (Table 1). We concentrated on lava compositions from the northernmost regions of NVP (>70° north), which have the lowest Al<sub>2</sub>O<sub>3</sub> contents [*Weider et al.*, 2015] but also the highest Na<sub>2</sub>O contents [*Peplowski et al.*, 2014] and which have not yet been experimentally investigated for viscosity characterization. The synthetic composition was prepared at the Petro-Volcanology Research Group laboratories of the University of Perugia (hereafter PVRG labs). Our composition has a ratio of nonbridging oxygen to tetrahedrally coordinated cations equal to 0.89 reflecting its high degree of depolymerization. This corresponds well with compositions reported by *Stockstill-Cahill et al.* [2012] and *Vander Kaaden and McCubbin* [2016]. When plotted in a total alkali versus silica diagram, our experimental composition lies between trachy-andesite and trachy-dacite fields, similar to the compositions investigated by *Sehlke and Whittington* [2015] and *Vander Kaaden and McCubbin* [2016].

Five hundred grams of glass were prepared by melting a mixture of oxides and carbonates at 1873 K for 4 h in a Pt<sub>80</sub>Rh<sub>20</sub> crucible in air. Melting was performed in a Nabertherm HT 04/17 MoSi<sub>2</sub>-heated box furnace (Nabertherm GmbH, Lilienthal, Germany). The melt was poured on to a brass plate to quench. To ensure homogeneity, the quenched melt (glass) was crushed, remelted, and quenched again using the same technique. This technique ensures compositional homogeneity of the glass [*Vetere et al.*, 2015]. Qualitatively, high fluidity was observed during quenching suggesting a low viscosity of the melt.

Viscosity measurements have been performed in a Gero HTRV 70-250/18 high-temperature tube furnace with MoSi<sub>2</sub> heating elements (Gero GmbH, Neuhausen, Germany) operating up to 2073 K at room pressure. Thermal ramps can be precisely controlled via computer using the Eurotherm iTools v. 9.57.11 software (Eurotherm, Worthing, West Sussex, UK). Viscosity measurements were performed with a rotational Anton Paar RheolabQC viscometer head at the PVRG labs. This instrument consists of a sample-filled crucible and a rotating measuring spindle that is immersed into the sample. The crucible hosting the silicate melt is made of Pt<sub>80</sub>-Rh<sub>20</sub> with an inner diameter of 37 mm (outer diameter 40 mm) and height of 70 mm. The spindle is made of Al<sub>2</sub>O<sub>3</sub> with a circular section of 12.2 mm in diameter and is fixed with a standard collet chuck to the head of the viscometer. The lower end of the Al<sub>2</sub>O<sub>3</sub> rod is sheathed by a tight-fitting Pt<sub>80</sub>-Rh<sub>20</sub> foil (0.2 mm thick) in order to prevent any contamination of the silicate melts during the experimental runs. The rotational viscometer allows measurements under controlled shear rate ( $\dot{\gamma}$ ). This allows us to investigate possible shear thinning (an increase of viscosity with decreasing  $\dot{\gamma}$ ) or shear thickening (a decrease of

viscosity with decreasing  $\dot{\gamma}$ ) effects. Methods and procedures described by *Dingwell* [1986] and *Ishibashi* [2009] were applied in order to determine melt and melt + crystal viscosities. With this equipment, viscosity can be measured in the range from 0.1 to  $10^5$  Pa s [*Hess et al.*, 1996]. The viscometer was calibrated against National Institute of Standards and Technology 717a standard glass, for which the temperature-viscosity relationship is accurately known (<https://www.nist.gov>). Reproducibility of measurements on the standard glass is on the order of  $\pm 0.03$  log units. Since NVP melt viscosity was expected to be low, before running experiments we calibrated the viscometer using a Wacker silicone standard having viscosity of 10 Pa s [*Spina et al.*, 2016a, 2016b]. One hundred measurements were performed, and the results showed good reproducibility, with average values of  $9.7 \pm 0.3$  (standard deviation) Pa s.

The furnace hosting the experimental charge is equipped with aluminum cooling heads. These are positioned on the top and the bottom openings of the furnace tube in order to prevent overheating of the viscometer head. Cooling is achieved by a continuous flux of cold water (20°C). The furnace can move vertically using two pneumatic cylinders (details in *Morgavi et al.* [2015]). This has two major advantages as it allows us to (1) carefully prepare the experimental geometry by precisely positioning the outer and inner cylinders outside the furnace and (2) bring the furnace directly to the experimental temperature while the sample is still outside the furnace, preventing the sample from undergoing the entire thermal ramp.

Two cross-mounted Thorlabs single-axis translation stages with a standard micrometer allow the correct positioning of the spindle and the crucible. An alumina ( $\text{Al}_2\text{O}_3$ ) rod (length = 600 mm; FRIATEC Aktiengesellschaft, Mannheim, Germany) is fixed to the lower part of the structure holding the outer cylinder. Temperature was monitored using an in-house built S-type thermocouple ( $\text{Pt}_{10}\text{Rh}_{90}$  versus Pt) within an  $\text{Al}_2\text{O}_3$  sheath, positioned at the bottom of the crucible. As the rotation of the viscometer prevents the use of thermocouples directly wired to a controller, OMEGA wireless thermocouple transmitters UWTC-Series were employed (OMEGA Engineering, INC., Stamford, Connecticut, USA). Uncertainty on temperature measurements is on the order of 0.5 K.

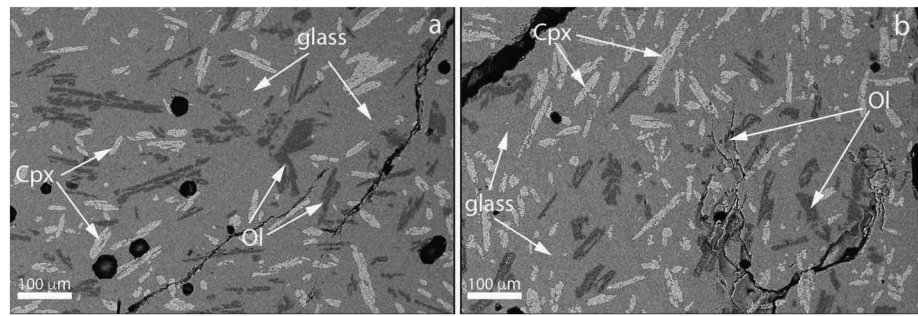
Prior to viscosity measurements,  $\sim 70$  g of melt was stirred at 1773 K for 2 h at strain rates ( $\dot{\gamma}$ ) of  $5\text{--}10\text{ s}^{-1}$ . This allowed for the complete removal of possible gas bubbles and the attainment of a compositionally homogeneous melt [*Dowty*, 1980; *Lofgren*, 1983; *Davis and Ihinger*, 1998; *Armienti*, 2008; *Iezzi et al.*, 2008, 2011; *Pupier et al.*, 2008; *Vetere et al.*, 2013a, 2015]. Samples used in the subliquidus temperature experiments were first melted at superliquidus conditions. The temperature was then decreased continuously to the required subliquidus value at a rate of 5 K/min. At the end of the experiments, samples were quenched by moving them into the cooled head of the furnace. The quench rate was on the order of 100 K/min which was sufficient to avoid the formation of quench crystals.

### 3. Analytical Methods

Experimental samples were cored out from the outer cylinder after quenching, mounted in epoxy, ground flat and progressively polished using diamond paste for textural and chemical analysis. The composition of phases, i.e., the starting glass (for superliquidus experiments); the glass matrix; and crystalline phases of run-products (for subliquidus experiments) were analyzed using a CAMECA SX100 electron microprobe analyzer at the University of Hannover (Germany). Analyses were performed with an accelerating voltage of 15 kV. For glasses, we used a beam current of 8 nA and a defocused beam of 10  $\mu\text{m}$ . Mineral analyses were performed with a beam current of 15 nA and a focused beam (1  $\mu\text{m}$ ). Counting time on peak was 15–20 s (7.5–10 s for background) for each element. For glasses and minerals, we used the following standards for  $K\alpha$  X-ray line calibration: albite for Na, orthoclase for K, wollastonite for Si and Ca,  $\text{Al}_2\text{O}_3$  for Al,  $\text{TiO}_2$  for Ti, and MgO for Mg. Raw data were corrected with the CATZAF software, and results are reported in Tables 1 and S1 and S2 in the supporting information. A high-resolution scanning electron microscope with field-emission gun (FE-SEM LEO 1525 - ZEISS), installed at the Department of Physics and Geology (University of Perugia), was used to collect backscattered electron (BSE) images of the experimental charges. Additional details about the analytical conditions of FE-SEM and EPMA, as well as data reduction procedures, are reported in *Vetere et al.* [2015] and *Namur et al.* [2016a].

Abundance and distribution of mineral phases in each experimental charge were determined on BSE images using the Image-ProPlus 6.0 software. This software was also used to calculate length-width aspect ratios of





**Figure 1.** Backscattered electron images of representative experimental products. (a) Experiment at temperature  $T = 1502$  K and shear rate  $\dot{\gamma} = 5.0 \text{ s}^{-1}$ ; (b) experiment at same temperature as (a) with a shear rate  $\dot{\gamma} = 0.1 \text{ s}^{-1}$ . The two experiments show comparable crystal contents. Labeled crystal phases are olivine (Ol), clinopyroxene (Cpx), and glass.

the crystals by applying an automatic ellipse fitting procedure. When crystals were in contact, aspect ratios were measured manually. Details on the analytical protocol for image analysis are given in previous works [Iezzi *et al.*, 2008, 2011; Lanzafame *et al.*, 2013]. Representative BSE images are reported in Figure 1. In particular, the estimation of mineral phase proportions (in area %) was made by linking gray-level values of BSE images with compositions. No stereological correction was applied [Iezzi *et al.*, 2008; Vetere *et al.*, 2010, 2013a, 2013b]. Magnification used in image acquisition ranged from 150 $\times$  to 1600 $\times$  depending on the size, shape, and amount of crystalline phases. For each sample, 5 to 10 BSE images, cut perpendicularly to the rotational axis, were collected and analyzed on different parts of the polished section to ensure that results were statistically significant.

## 4. Results

### 4.1. Mercury's Superliquidus Melt Viscosity and Modeling

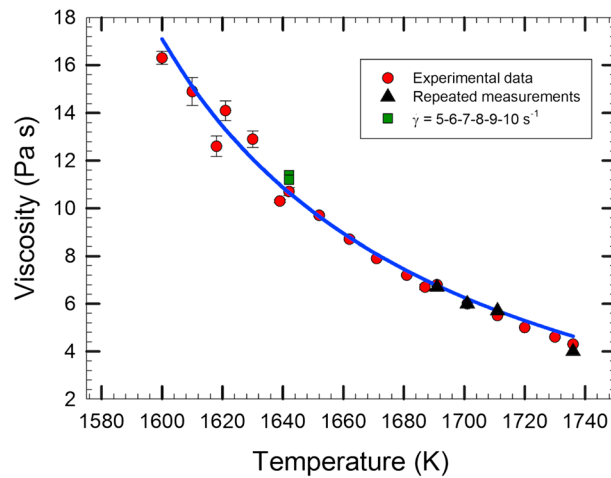
The liquidus temperature ( $T_L$ ) of our NVP composition was estimated using the alpha-MELTS software package [Asimow *et al.*, 2004; Smith and Asimow, 2005] providing a value for  $T_L = 1581$  K. Experimental data are in good agreement with this estimate; indeed, the experiment performed at 1569 K contained only 2.1 area % of crystals indicating that the liquidus temperature is slightly higher. This is confirmed by the experiment at  $T = 1600$  K in which no crystals were detected.

Twenty-seven superliquidus experiments in the temperature range between 1600 and 1736 K were performed in order to determine the dependence of melt viscosity on temperature (Table 2 and Figure 2). In these experiments, melt viscosity ranges from 4.0 Pa s and 16.3 Pa s. Each of the viscosity values presented in Table 2 is an average of 100 to 500 measurements, collected on timescales from 120 to 240 min,

**Table 2.** Experimental Conditions and Results of Viscosity Measurements ( $\eta$ ) Using the Concentric Cylinder Apparatus<sup>a</sup>

#	$T$ (K)	$\eta$ (Pa s)	SD	$\dot{\gamma}$
M29	1600	16.3	0.27	5
M28	1610	14.9	0.58	5
M32	1618	12.6	0.43	5
M27	1621	14.1	0.41	5
M26	1630	12.9	0.35	5
M31	1639	10.3	0.06	5
M15	1652	9.7	0.05	5
M14	1662	8.7	0.07	5
M13	1671	7.9	0.04	5
M12	1681	7.2	0.05	5
M17	1687	6.7	0.11	5
M10a	1691	6.8	0.05	5
M10b	1691	6.7	0.08	5
M9	1701	6.0	0.06	5
M7a	1711	5.5	0.05	5
M7b	1711	5.7	0.03	5
M 6	1720	5.0	0.03	5
M 5	1730	4.6	0.04	5
M 3a	1736	4.3	0.03	5
M 3b	1736	4.0	0.04	5
M 16a	1642	10.7	0.17	5
M 16b	1642	11.2	0.15	5
M 16c	1642	11.2	0.26	6
M 16d	1642	11.3	0.23	7
M16e	1642	11.2	0.25	8
M16f	1642	11.4	0.21	9
M16 g	1642	11.2	0.16	10

<sup>a</sup>  $\dot{\gamma}$  (in  $\text{s}^{-1}$ ) refers to the applied shear stress; SD refers to standard deviation of viscosity measurements.



**Figure 2.** Viscosity data for melts at superliquidus conditions. The continuous line represents the predictive model given in equation (1). The black full triangles are repeated measurements; the green squares represent experiments performed at different shear rates.

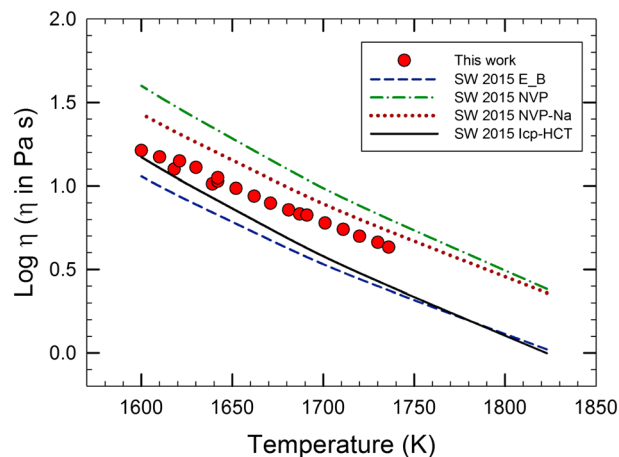
due to its high fluidity. No measurable effect of shear rate on viscosity was detected at superliquidus temperature (Table 2).

The obtained viscosity data set was used to develop an empirical model of viscosity as a function of temperature. The model is based on the Vogel-Fulcher-Tammann (VFT) equation [Vogel, 1921]:

$$\log \eta (\text{Pa s}) = A + B/(T - T_0) \quad (1)$$

where  $T$  is the temperature in Kelvin and  $A$ ,  $B$ , and  $T_0$  are fitting parameters, representing the preexponential term, the pseudo-activation energy (related to the barrier of potential energy obstructing the structural rearrangement of the liquid), and the VFT temperature, respectively.

The VFT approach accounts for the non-Arrhenian temperature dependence of melt viscosity. Data were fitted using a nonlinear least squares regression providing the following parameters:  $A = -4.30$  (Pa s),  $B = 6244.9$  (K), and  $T_0 = 471.2$  (K).



**Figure 3.** Variation of viscosity as a function of temperature showing the comparison between data presented in this work and literature data using possible Mercury compositions. lcp-HCT and E\_B refer to basaltic komatiites and enstatite basalt, respectively, as reported in *Sehlke and Whittington* [2015].

with torque values measured continuously. The majority of the experiments were performed at a shear rate of  $5 \text{ s}^{-1}$ . We selected this value because of the very low viscosity of the investigated composition. At lower shear rate the instrument's torque limit is reached and measurements are not feasible. Experiments at 1736 K (M3a-b), 1711 K (M7a-b), and 1691 K (M10a-b) were repeated twice and show a high reproducibility (Table 2). The dependence of viscosity upon shear rate ( $\dot{\gamma}$ ) was investigated with a series of seven experiments performed at 1672 K with  $\dot{\gamma}$  from 5 to  $10 \text{ s}^{-1}$  (samples M16a-g in Table 2). Larger strain rates were not applied in order to prevent the melt to spill out from the crucible

This relationship reproduces our experimental data with a  $r^2$  value of 0.99 (Figure 2). Note that the fitting parameters reported above are only valid for high-temperature viscosity data. In fact, when comparing our VTF parameters with those presented in *Sehlke and Whittington* [2015] for melts considered similar to those erupted on Mercury, we observe a general agreement with terms  $A$  and  $B$ , but a disagreement with the  $T_0$  parameter. This reflects the inability of the above model to reproduce data below the liquidus temperature.

The comparison of viscosity data presented here to those recently published by *Sehlke and*

**Table 3.** Experimental Conditions and Results of Viscosity Measurements ( $\eta$ ) During Crystallization Experiments at Different Shear Rate ( $\dot{\gamma}$ )<sup>a</sup>

#	Temperature (K)	Log $\eta$ (Pa s) $\dot{\gamma} = 5 \text{ s}^{-1}$	Log $\eta$ (Pa s) $\dot{\gamma} = 1 \text{ s}^{-1}$	Log $\eta$ (Pa s) $\dot{\gamma} = 0.1 \text{ s}^{-1}$	Flow Index ( $n$ )	K (Pa s)	Olivine (Area %)	Pyroxene (Area %)	Crystallinity (Area %)	Crystallinity Mass Balance (vol %)
M33	1502	3.04	3.36	4.01	0.4201	$1172 \pm 175$	$17.6 \pm 3.0$	$9.9 \pm 1.3$	$27.5 \pm 3.0$	23.7
M34	1510	2.67	3.18	3.59	0.4551	$593 \pm 53$	$11.5 \pm 1.9$	$9.9 \pm 0.8$	$21.4 \pm 2.2$	16.3
M35	1520	2.16	2.69	3.10	0.4568	$207 \pm 30$	$9.9 \pm 0.2$	$1.7 \pm 0.2$	$11.8 \pm 1.2$	10.1
M36	1533	1.99	2.47	2.72	0.5272	$131 \pm 22$	$8.8 \pm 0.9$	–	$8.8 \pm 0.9$	8.2
M37	1545	1.93	2.25		0.5333	$61 \pm 5$	$5.0 \pm 0.7$	–	$5.0 \pm 0.7$	7.3
M38	1569	1.63			–	–	$2.1 \pm 0.3$	–	$2.1 \pm 0.3$	3.9

<sup>a</sup>Rheological parameters [flow index ( $n$ ) and consistency ( $k$ )] and crystal contents (both area % and vol %) are also reported.

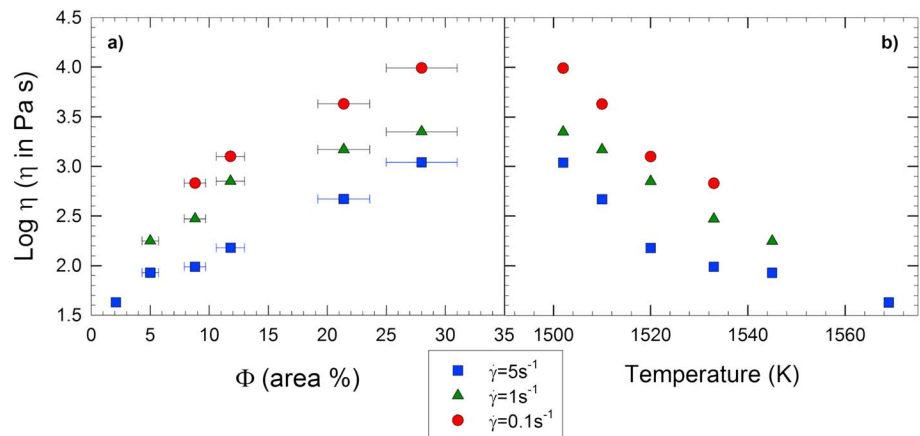
Whittington [2015] shows a maximum difference of 5.0 Pa s log ( $\eta$ ) (Table 1 and Figure 3) mainly due to the different chemical composition of the silicate melt used in the experiments. In this respect, an important feature of our composition is the high Na<sub>2</sub>O (8.85 wt %) and low Al<sub>2</sub>O<sub>3</sub> (8.95 wt %) contents, in agreement with MESSENGER data for the most evolved lavas of the NVP [Peplowski *et al.*, 2014, 2015]. These compositional characteristics are responsible for the low viscosity of our silicate melt. Previous experimental data [e.g., Le Losq and Neuville, 2013; Vetere *et al.*, 2014; Stabile *et al.*, 2016] are in agreement with the lower melt viscosity described here.

#### 4.2. Mercury's Subliquidus Viscosity

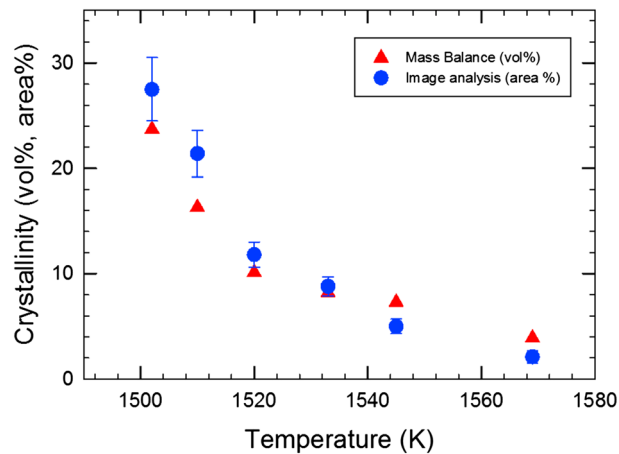
The viscous behavior of the melt below  $T_L$  was investigated using 15 experiments in the temperature range of 1569–1502 K at three different shear rates: 0.1, 1.0, and 5.0 s<sup>−1</sup>. Prior to cooling the melt was kept at 1673 K for 2 h in order to erase possible crystal nuclei. The final dwell temperature was reached using a cooling ramp rate of 20 K/min. Experiments were run for up to 24,000 s. In this temperature range, crystals nucleated and grew, increasing from 2 to 28 area %, as temperature decreased (Table 3 and Figures 4a and 4b).

The relative abundance of mineral phases, crystal sizes, and shapes does not vary significantly at different shear rates. Olivine (pure forsterite) is the liquidus phase in all experiments. Clinopyroxene appears at a temperature of 1520 K and remains stable in the system down to 1502 K. Clinopyroxene does not show significant compositional evolution, varying from Wo<sub>39</sub>En<sub>61</sub> at 1520 K to Wo<sub>37</sub>En<sub>62</sub> at 1502 K, although a slight increase of sodium content is observed (from 0.25 to 0.95 wt %) with decreasing temperature (Table S2). Image analysis estimates of crystal fractions and those obtained by mass balance calculations agree well and are reported in Table 3 and in Figure 5.

The compositional evolution of the melt during crystallization is shown in Figure 6 (see also the supporting information). SiO<sub>2</sub> increases from 62.35 to 65.95 wt % as temperature decreases from liquidus ( $T_L$ ) to 1502 K.



**Figure 4.** (a) Variation of viscosity [ $\log(\eta)$ ] as a function of crystal content ( $\Phi$  area %) at different shear rates ( $\dot{\gamma}$ ); (b) variation of viscosity [ $\log(\eta)$ ] as a function of temperature for crystallization experiments at different shear rates ( $\dot{\gamma}$ ). Measurement errors in Figure 4b are comparable or lower than symbol size.



**Figure 5.** Comparison between crystal content obtained by image analysis (area %) and mass balance calculations (vol %). Errors in area % are on the order of 10% relative.

Similar trends are observed for  $\text{Al}_2\text{O}_3$ ,  $\text{TiO}_2$ , and  $\text{K}_2\text{O}$ , whereas  $\text{CaO}$  and  $\text{MgO}$  decrease.  $\text{Na}_2\text{O}$  shows a more scattered behavior, presumably due to the combined effect of devolatilization of this element at high temperature and its incorporation into clinopyroxene crystals.

Viscosity versus time at constant temperature shows a typical S-shape curve, as reported in Figures 7a, 7c, and 7e. In Figures 7b, 7d, and 7f, representative BSE images of experimental samples are also shown for three selected samples (M34, M35, and M36; Table 3) at 1510, 1520, and 1533 K at shear rate ( $\dot{\gamma}$ ) of  $5.0 \text{ s}^{-1}$ .

As shown in Table 3 and Figures 4 and 7, viscosity at  $\dot{\gamma} = 0.1 \text{ s}^{-1}$  varies between 2.72 and  $4.01 \text{ Pa s}$  ( $\log(\eta)$  for temperatures ranging from 1533 to 1502 K. As  $\dot{\gamma}$  values increase to 1.0 and  $5.0 \text{ s}^{-1}$ , viscosity  $\log(\eta)$  varies between 1.93 and  $3.04 \text{ Pa s}$  (at 1545 K) and 2.25– $3.36 \text{ Pa s}$  (at 1502 K); i.e., viscosity decreases as shear rate increases. This points to a shear thinning behavior of the partly crystallized melt. From the curves displayed in Figure 7, the time for crystal nucleation and growth can be evaluated at different temperatures [Vona *et al.*, 2011]. Crystal growth appears to be inversely correlated to the shear rate indicating that the higher the applied shear rate, the lower the time needed for crystals to nucleate and grow. For example, at 1510 K the time to reach a constant viscosity value (plateaux in Figure 7a) at  $\dot{\gamma} = 0.1 \text{ s}^{-1}$  is slightly longer than 4.0 h. At the same temperature, viscosity reaches a constant value after about 2.0 h at  $\dot{\gamma} = 5.0 \text{ s}^{-1}$ . As temperature increases to 1533 K, the time taken to reach a constant viscosity in the partly crystallized system is about 2.0 h and 1.0 h, for  $\dot{\gamma}$  of  $0.1 \text{ s}^{-1}$  and  $5.0 \text{ s}^{-1}$ , respectively (Figure 7e).

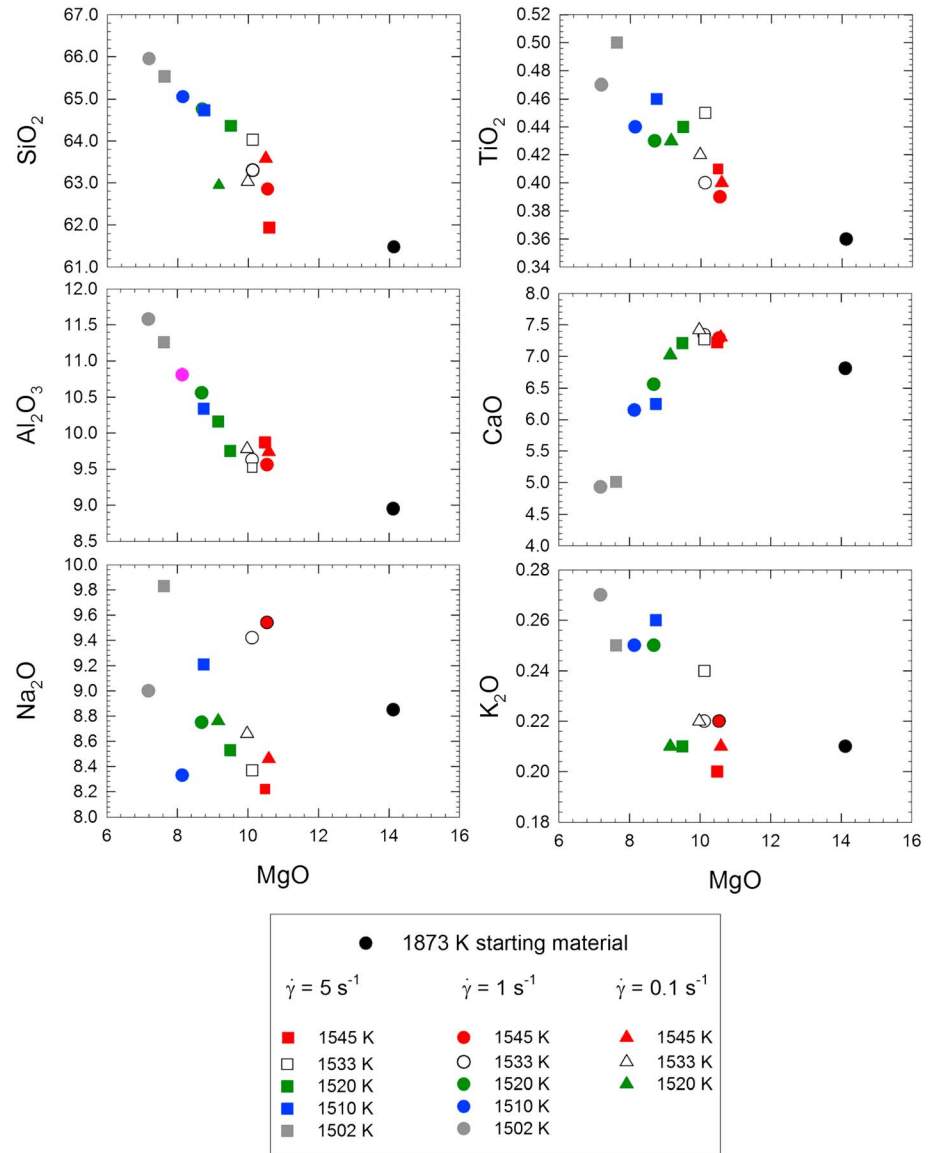
#### 4.3. Further Rheological Considerations

During crystallization, the shear thinning behavior becomes evident for all experiments, with viscosity decreasing as the shear rate increases (Figure 4). Noteworthy is the fact that the shear-thinning behavior also arises at low crystal fractions ( $\Phi_c = 0.05$ ) and increases at higher crystal contents (Figure 4a). Following the work from *Sehlke and Whittington* [2015], *Sehlke et al.* [2014], and from *Vona et al.* [2011 and 2013], we calculate the flow index using the linear regression coefficients derived from our experimental data set (Table 3 and Figures 8a and 8b; see also the supporting information for details).

Flow index values are relatively low compared to those estimated by *Sehlke et al.* [2014] for Hawaiian basalts, as well as from *Sehlke and Whittington* [2015] for Mercury's analog compositions (Figure 8b). This is presumably due to the large aspect ratios of crystals in our study (up to 14) that can strongly influence flow index values [Mader *et al.*, 2013]. This highlights the highly non-Newtonian behavior of our partly crystallized analog composition. As an example, at a temperature of 1533 K and crystal content of  $\sim 9.0$  area % (sample M36 in Table 3) the flow index ( $n$ ) is 0.53. Under these conditions, an increase in shear rate from 0.1 to  $5 \text{ s}^{-1}$  results in a decrease in viscosity by a factor of 6. In a similar way, experiment M33 performed at 1502 K (crystal content of 28 area % with  $n = 0.42$ ) shows a decrease in viscosity by a factor of 10 (see Table 3 and Figures 4 and 8). A comparison between the rheological behaviors of our composition with data from *Sehlke and Whittington* [2015] is provided in Figure S1 in the supporting information, where the change in apparent viscosity with crystal fraction is shown. Results indicate a good general agreement between literature data and our experimental results. A slight deviation is observed at the lowest shear rate possibly due to differences in crystal shapes and distributions.

Flow curves for Mercury lavas superimposed on the pahoehoe to 'a'a transition threshold diagram, derived from *Sehlke et al.* [2014], are presented in Figure 9. Mercury's lavas show similar characteristics, but at slightly lower crystal fractions (0.05) compared to those studied by *Sehlke et al.* [2014]. As the melt crosses the

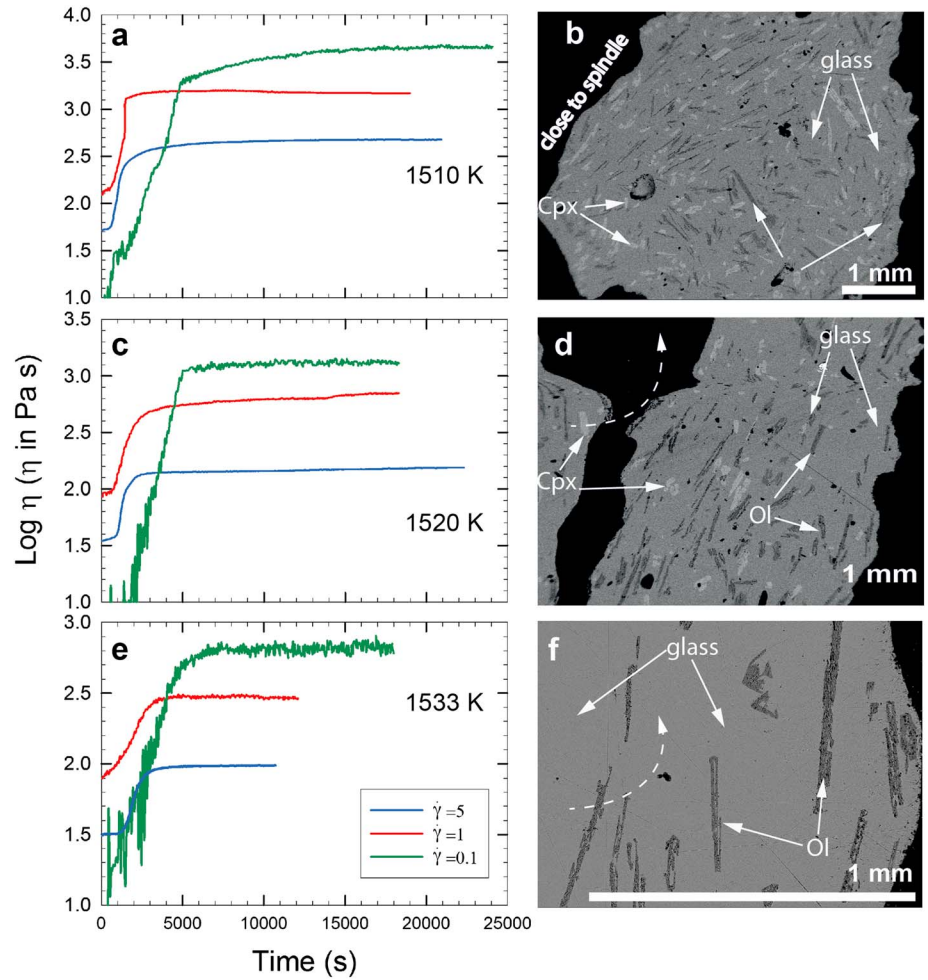




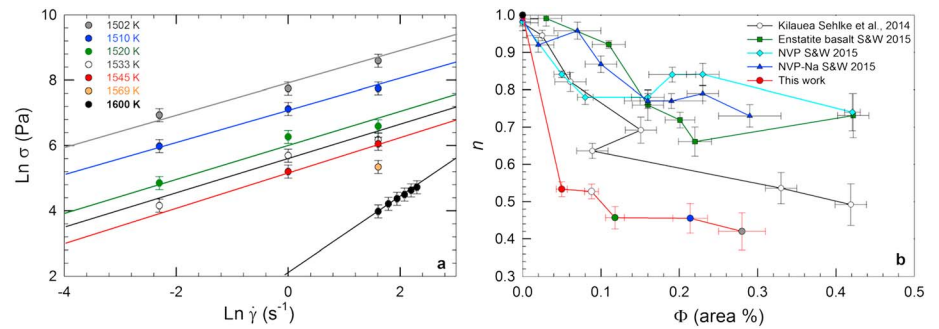
**Figure 6.** Change of the residual glass composition (in wt % of element concentrations) upon crystallization of the silicate melts. The triangle, circle, and square indicate experiments performed at shear rate of 0.1, 1.0 and 5.0 s<sup>-1</sup>, respectively.

liquidus temperature (1581 K), pseudoplasticity arises (flow index  $n < 0.7$ ), as shown by the fact that the magma lies in the transition threshold zone (TTZ) in Figure 9. It is not surprising that pseudoplastic behavior is found at very low crystal content. In fact, *Ishibashi and Sato* [2007] detected pseudoplastic behavior in alkali olivine basalt at  $\Phi$  as low as 0.05 (olivine, plagioclase, and spinel). In addition, *Ishibashi* [2009] detected pseudoplastic behavior in basalt from Mount Fuji between  $\Phi$  of 0.06 to 0.13 due to suspended plagioclase crystals. The transition from pahoehoe to 'a'a for the analog Mercurian lava studied here begins at a temperature of  $\sim 1533 \pm 10$  K.

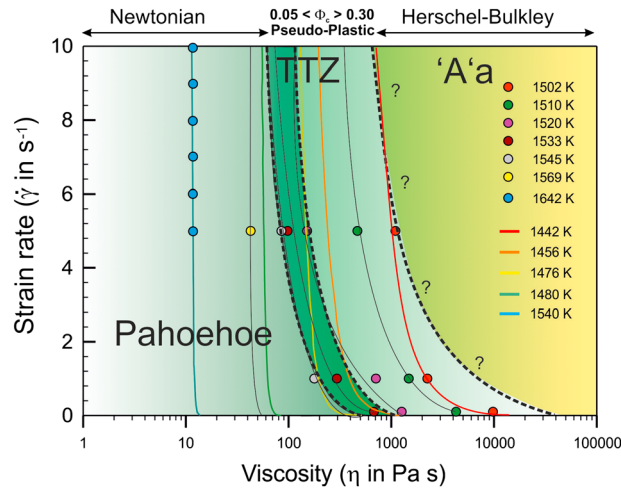
In modeling viscosity versus crystal content, the relative viscosity (defined as  $\eta_r = \eta_{\text{eff}}/\eta_m$ , where  $\eta_{\text{eff}}$  is the effective viscosity of the suspension with a volume fraction of crystals and  $\eta_m$  is the viscosity of the melt; see the supporting information for details) is one of the most used parameter. Figure 10 shows the variation of  $\eta_r$  as crystallinity ( $\Phi$ ) increases. Our experimental data can be described by the Einstein-Roscoe equation (see the supporting information) for relatively high  $\dot{\gamma}$ . Lowering  $\dot{\gamma}$  to the value 0.1 s<sup>-1</sup> results in higher  $\eta_r$ .



**Figure 7.** (a, c, and e) Variation in viscosity as a function of time and temperature at different shear rates; (b, d, and f) corresponding BSE images and phases after reaching the saturation threshold (flat part of profiles in the plots on the left) for experiments performed at  $\dot{\gamma} = 5 \text{ s}^{-1}$ . The dashed-lined arrows indicate flow direction; Ol and Cpx refer to olivine and clinopyroxene, respectively.



**Figure 8.** (a) Linear regressions of  $\ln(\sigma)$  (shear stress) against  $\ln(\dot{\gamma})$  (shear rate) for the studied composition. Linear regressions for each data set are also shown. Note the drastic change in slope when passing from the superliquidus experiment (1600 K) to the crystal-bearing experiments due to the onset of crystallization; (b) flow index derived from the linear regression of data in Figure 8a. Estimated rheological parameters ( $n$  and  $k$ ) are given in Table 3.



**Figure 9.** Flow curves for the analog Mercury lavas from this work superimposed on the pahoehoe to 'a'a transition diagram from *Sehlke et al.* [2014]. The colored lines from right to left refer to data from *Sehlke et al.* [2014] for Hawaiian lavas; the dots refer to data from this study. Lava on Mercury start the transition from pahoehoe to 'a'a at a temperature of  $\sim 1533 \pm 10$  K. The question mark, as reported in *Sehlke and Whittington* [2015], emphasizes the approximate location of the end of the transition threshold zone TTZ.

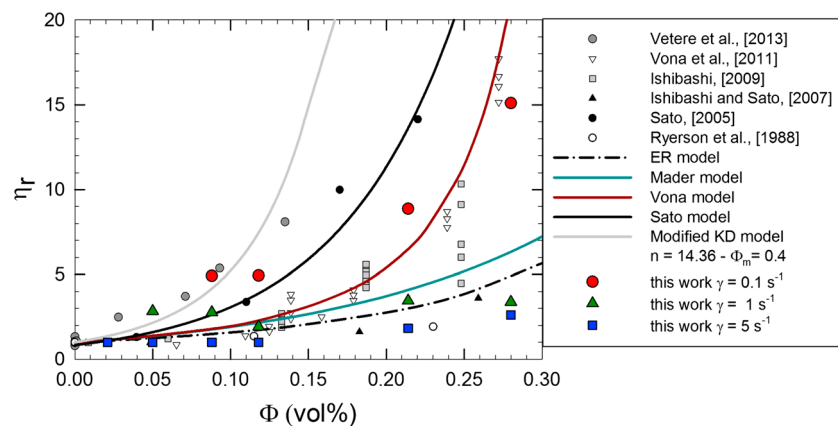
(reaching values up to  $\sim 15$ ) matching results reported by *Vona et al.* [2011] for crystallinity higher than 20 vol %.

## 5. Discussion

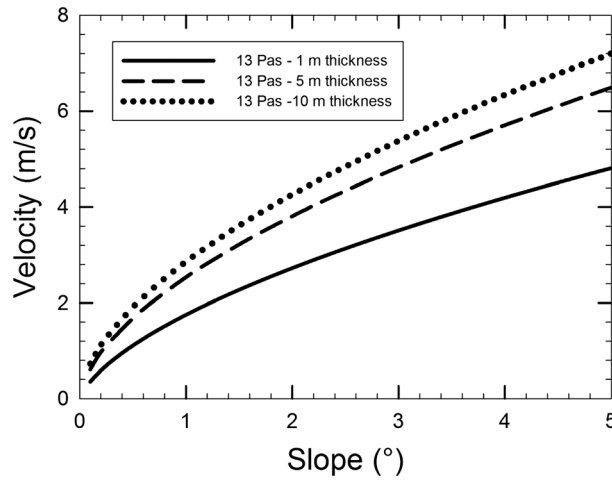
According to results presented by *Byrne et al.* [2013] on the lava flows forming the NVP, some important constraints emerge: (i) NVP lavas can flow over very long distances, on the order of hundreds of kilometers; (ii) the channels filled by the lavas appear quite variable in terms of their width, spanning from a few hundreds meters to tens of kilometers; (iii) the morphological characteristics of lava flows, observed using high-resolution images of the planet surface, indicate that lavas were emplaced as turbulent flows [*Byrne et al.*, 2013]. These constraints must be taken into account when attempting to shed

new light upon the mechanisms that might have contributed to the emission and emplacement of lava flows forming the NVP. In the following discussion, the new experimental data presented in this work are integrated with the above constraints, in order to refine our understanding of the dynamics of NVP lava flows. Notably, in conducting both superliquidus and subliquidus experiments, we attempt to constrain the behavior of lavas in terms of velocity and distance covered by the flows, as well as the possible effusion rates.

The initial issue to consider is the slope of the terrains on which the lava was emplaced. Although it would be preferable to use preeruption topographic data to estimate lava flow velocity, this is not possible at present and we must rely upon present-day, post-NVP emplacement topography [e.g., *Byrne et al.*, 2013]. Hereafter, we consider average slope values in between  $0.1^\circ$  and  $5^\circ$ ; these are of the same order of magnitude as those used in other studies of lava flows on the surface of Mercury [e.g., *Byrne et al.*, 2013; *Hurwitz et al.*, 2013].



**Figure 10.** Relationship between relative viscosity ( $\eta_r$ ) and crystal fraction ( $\Phi$ ; measured by image analysis, see text for details) for the analog melt in this study (colored symbols) and literature data *Vetere et al.* [2013b]. The curves correspond to different models: ER, Einstein-Roscoe model [*Einstein*, 1906; *Roscoe*, 1952]; KD, Krieger-Dougherty model [*Krieger and Dougherty*, 1959]; Sato model [*Sato*, 2005]; Mader model [*Mader et al.*, 2013]; Vona model [*Vona et al.*, 2011]; see also the supporting information for details).



**Figure 11.** Variation of lava flow velocity as a function of topographic slope for three lava flows with thickness of 1 m, 5 m, and 10 m (equations (2)–(4)).

The acceleration due to gravity on Mercury is  $g = 3.61 \text{ m/s}^2$  [i.e., almost one third of that of the Earth [Mazarico et al., 2014]. Parameter  $\lambda$  can be calculated as follows:

$$\lambda = \frac{1}{[0.79 \ln(\text{Re}) - 1.64]^2} \quad (3)$$

where  $\text{Re}$  is the Reynolds numbers defined as

$$\text{Re} = \frac{2\rho u h}{\eta} \quad (4)$$

$\rho$  is the bulk lava density ( $2450 \text{ kg/m}^3$  for the melt considered here, calculated following Ochs and Lange [1999]) and  $\eta$  is the lava viscosity (Pa s).

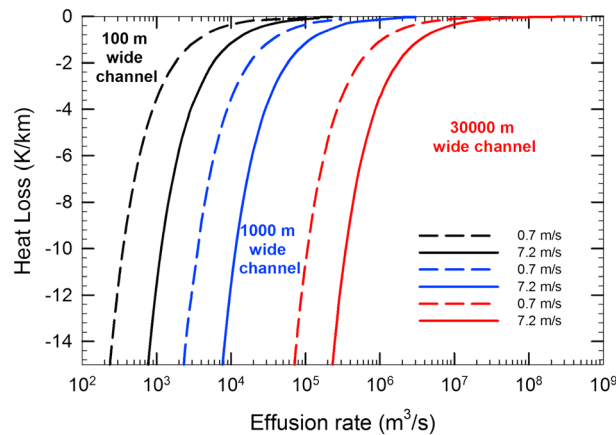
With regard to the thickness of the flows to be used in the above equations, the total thickness of NVP lavas has been estimated to be  $\sim 0.7\text{--}1.8 \text{ km}$  [Ostrach et al., 2015; Head et al., 2011; Klimczak et al., 2012; Byrne et al., 2013]. However, this thickness is likely to be the result of the superimposition of different lava flows, whose individual thicknesses are presently unknown. Some constraints can be derived from terrestrial analogous lavas. Among them, Hawaiian lavas with rheological behaviors similar to the silicate melt considered here typically show individual flow thicknesses ranging from 1 to 5 m [Griffiths, 2000]; furthermore, komatiites, also commonly considered similar to Mercurian lavas [Weider et al., 2012], show flows with a slightly greater thickness of about 10 m [Williams et al., 2001]. Accordingly, values of  $h$  from 1 to 10 m are used in equations (2) and (4).

The values of viscosity to be used in the above equations depend upon the eruptive temperature. Possible eruption temperatures for Mercurian lavas are estimated to be around 1623 K [Charlier et al., 2013; Namur et al., 2016b]. As the estimated liquidus temperature for the melt used in the experiments is similar (1600 K) to the suggested eruptive temperature, we started our modeling considering 1623 K as a representative eruptive temperature of the lava that is initially erupted. Changing the eruptive temperature to 1600 K does not affect the outcomes of the model presented below. According to our experimental data and modeling (Figure 2), at 1623 K the viscosity of the silicate melt is  $\sim 13 \text{ Pa s}$ . Assuming constant effusion rates, calculated velocities for lava thicknesses of 1, 5, and 10 m, considering varying ground slopes (from 0.1 to  $5^\circ$ ) are shown in Figure 11. As expected, results show that lava flows with larger thickness consistently have larger velocities (see also Table S3). In addition, in order to maintain the turbulent regime ( $\text{Re}$  larger than 2000) for lava emplacement [Byrne et al., 2013], minimum velocities must be larger than  $\sim 1.2 \text{ m/s}$  (on a slope of  $0.3^\circ$ ), and  $\sim 0.7 \text{ m/s}$  (on a slope of  $0.1^\circ$ ) for lava thicknesses of 5 and 10 m, respectively. Note that for lava thicknesses on the order of 1.0 m, the turbulent regime is only possible for slopes larger than  $10^\circ$ , a value which

As the emplacement of lavas on Mercury likely occurred in a turbulent regime [Byrne et al., 2013] we can use the approach proposed by Williams et al. [2001], which is valid for high Reynolds numbers ( $\text{Re} \gg 2000$ ), to infer the possible velocity of lava flows. This method allows for the estimation of lava flow velocity  $u$  (m/s), considering the ground slope  $\theta$  ( $^\circ$ ) and the lava friction coefficient  $\lambda$ :

$$u = \sqrt{\frac{4gh \sin(\theta)}{\lambda}} \quad (2)$$

where  $g$  ( $\text{m/s}^2$ ) and  $h$  (m) are the acceleration due to gravity and the lava flow thickness, respectively.



**Figure 12.** Variation of heat loss (in K/km) as a function of effusion rates for a lava flowing in 100, 1000, and 30,000 m width channels, with velocities of 0.7 and 7.2 m/s, respectively. Details are provided in the main body of text.

NVP on Mercury [Byrne *et al.*, 2013]. In addition, we consider, as minimum and maximum velocities of the lava, the values obtained above for a lava flow of thickness  $h = 10$  m flowing on a slope of  $0.1^\circ$  ( $u = 0.7$  m/s) and for a lava flow of the same thickness flowing on a slope of  $5^\circ$  ( $u = 7.2$  m/s). Note that according to the above discussion, these end-member values of  $u$  include all possible values of velocity for a lava flowing down a slope at an angle between  $0.1$  and  $5^\circ$ , with a thicknesses ranging from 5 to 10 m. A further constraint to be considered in the model is the emissivity value of the lava. According to Harris [2013] this parameter shows little variability, even among very different magmatic compositions. In particular, it ranges from  $\sim 0.8$  to  $\sim 0.9$  from basalt to trachyte; accordingly, in the model, we used an emissivity value of 0.85. The differences produced when this parameter is changed are negligible. The FLOWGO model accounts for the formation of a crust developing on the outer part of the lava acting as a thermal insulation boundary and limiting the heat loss. In addition, turbulence cannot be directly included in FLOWGO. However, the large velocity values used in the model can be considered as a proxy for turbulence implying that larger velocities produce larger covered areas by the lava and, hence, larger heat losses. Parameters used in the model are reported in Table S4; details about the FLOWGO model can be found in Harris and Rowland [2001].

Figure 12 shows the variation of heat loss (in K/km) of the lava as a function of effusion rate (in  $\text{m}^3/\text{s}$ ). The plot displays six curves corresponding to lava flows with the above-considered velocities (0.7 and 7.2 m/s) flowing in channels with widths of 100, 1000, and 30000 m. The graph shows that the curves have a similar behavior and tend to saturate toward constant values of heat loss at high effusion rates (on the order of  $10^4$ ,  $10^5$ , and  $10^7$  for channels having width of 100, 1000, and 30000 m, respectively). At lower effusion rates the heat loss dramatically increases (Figure 12). The curves corresponding to the lava flowing with a velocity of 0.7 m/s indicate that at the same value of effusion rate, the heat loss is always lower in comparison to the lava flowing with a velocity of 7.2 m/s. From Figure 12, it also emerges that the channel width plays a major role in modulating heat loss. In fact, to maintain a similar amount of heat loss, strongly increasing effusion rates are required as the width of the channel increases.

As stressed above, a fundamental constraint to be satisfied is that a turbulent regime likely characterized the emplacements of the lava for distances on the order of 100 km [Byrne *et al.*, 2013]. According to the above discussion, Reynolds numbers larger than 2000 are possible considering the eruptive temperature  $T = 1623$  K (and relative value of viscosity,  $\eta = 13$  Pa s), and lava velocities larger than 0.7 m/s, according to the slope values and lava thicknesses reported above (see Table S3). Keeping lava velocity constant in the limits imposed above (i.e., 0.7 and 7.2 m/s), we can use the results shown in Figure 12 to evaluate how heat loss impacts lava rheology and the consequent dynamic regime of lava emplacement. As the lava cools down during its flow, its viscosity is expected to increase leading to a decrease of the Reynolds number and resulting, eventually, in the suppression of the turbulent regime. According to our experimental results and modeling (Figure 2), the viscosity of the analogous melt studied here shows minimal variations (13–20 Pa s) in the temperature range of 1623–1581 K (i.e., from eruptive to liquidus temperature; Figure 3). This implies that the

appears unlikely on the basis of recent studies in this sector of the planet's surface [e.g., Byrne *et al.*, 2013; Hurwitz *et al.*, 2013]. As the slope increases, the lava flow velocity can increase up to values on the order of 6.5 and 7.2 m/s, when flowing on a  $5^\circ$  ground slope, for thicknesses of 5 and 10 m, respectively.

In order to incorporate the possible effects of heat loss during the lava flow in our model, we performed thermal balance calculations using the FLOWGO model [Harris and Rowland, 2001]. In the model we consider that lavas can flow in channels with variable widths from 100, 1000, and 30,000 m, as observed for the



Reynolds number remains relatively constant during this temperature drop ( $\Delta T = 42$  K, i.e., 1623–1581 K) allowing the turbulent regime to remain almost unchanged. Considering that the lava has to cover a distance on the order of 100 km in turbulent regime [Byrne *et al.*, 2013], this would correspond to a heat loss of  $\sim 0.4$  K/km. According to the model shown in Figure 12, a heat loss of 0.4 K/km can be obtained at different effusion rates depending on the width of the channel in which the lava flows. In particular, effusion rates larger than approximately  $10^4$ ,  $10^5$ , and  $10^6$  m<sup>3</sup>/s are required for channel widths of 100, 1000, and 30,000 m, respectively. It is noteworthy that these estimates are in concurrence with independent results given by Keszthelyi and Self [1998] for the emplacement of long (on the order of 100 km) basaltic lava flows. In particular, Keszthelyi and Self [1998] report that in order to cover these large distances, a heat loss equal to or lower than 0.5 K/km is necessary. Furthermore, these authors suggest that effusion rates larger than  $10^3$ – $10^4$  m<sup>3</sup>/s and velocities on the order of 4–12 m/s are also required. These values are comparable to those arising from our model. From this discussion, it is therefore clear that the Mercurian analog melt studied here is able to flow over the long distances observed for the NVP in turbulent regime, under the effusion rates given above. Significantly, the required effusion rates (and relative single lava flow thickness) are comparable to those estimated for some of Earth's basaltic eruptions forming the so-called LIPs [e.g., Bryan *et al.*, 2010; Head *et al.*, 2011]. Consequently, the mechanism of eruption and emplacement of terrestrial flood basalts can be considered, as a first approximation, as a plausible geologic analogue for the Mercury's NVP lavas in agreement with the results reported by Vander Kaaden and McCubbin [2016].

A further issue that might deserve consideration is the possible effect of cooling of the lavas due to the temperature difference between diurnal and nocturnal times on Mercury. During a Mercurian day (corresponding to 59 terrestrial days), surface temperature can reach 725 K. At night, the surface temperature drops to about 90 K [Strom, 1977]. In these conditions, the high temperature of the planet may limit heat dissipation during daytime eruptions and, consequently, enhance the emplacement of lava flows. Conversely, during the night, the temperature drop could act as a limiting factor for the distance the lava is able to flow. However, in modeling lava flows, the formation of a crust developing on the outer part of the lava must be considered. This effect is considered in the FLOWGO models presented above. The formation of this crust acts as thermal insulation for the lava, and therefore, the effect of temperature difference between Mercurian day and night can be considered negligible.

According to the above discussion, it is apparent that NVP lavas were able to cover large distances without undergoing strong degrees of crystallization. Accordingly, most of their solidification history would have occurred when they stopped flowing and emplaced, defining the present morphology of Mercury's NVP. The causes why lavas stopped flowing on the surface of the planet can be variable. One possibility might be that the topography of the planet played a key role, for example, because of the presence of low topographies due to preexisting impact craters that allowed the lavas to stagnate, lose heat and solidify.

Further evidence that solidification of the lavas must have occurred mostly after emplacement is provided by results from crystallization experiments. Lavas can strongly reduce their ability to flow when approaching the so-called "maximum packing fraction." The maximum packing fraction strongly depends on the aspect ratio of crystals [Mader *et al.*, 2013]. Our experiments indicate that crystal aspect ratios range, on average, between 2 and 14. According to Mader *et al.* [2013] this corresponds to maximum packing fractions from  $\sim 52\%$  to  $28\%$ . As here we are evaluating the least favorable conditions under which the lavas can flow, we considered the lowest maximum packing fraction (i.e.,  $28\%$ ) as the reference crystal fraction that would strongly reduce (or stop) the ability of the lava to flow. Our experiments (Figures 4a and 4b) indicate that temperature needs to drop to 1502 K to reach a crystal content of  $\sim 28\%$ . The question is whether the lava in these conditions can preserve the turbulent flow regime, as required by morphological constraints provided by [Byrne *et al.*, 2013]. Our experimental results presented in Figure 4 and Table 3 show that the rate of increase in viscosity due to crystallization is different depending on the applied shear rate, due to a shear thinning behavior of the lava. As an example, at  $T = 1520$  K (corresponding to a crystal content of ca.  $10\%$ ; Table 3) viscosity changes from 144 Pa s to 1259 Pa s, as the shear rate decreases from 5 to  $0.1$  s<sup>-1</sup>. A similar behavior is observed for lower temperatures, i.e., larger crystal contents, up to the threshold limit of  $28\%$  crystal content (Figure 4).

The Reynolds number (equation (4)) can be used to assess whether the lava can emplace in turbulent flow conditions, i.e.,  $Re$  larger than 2000. In the following calculations, we consider a lava flow with thickness of 10 m flowing at velocities from 0.7 to 7.2 m/s (see above) and having viscosities determined by the

amount of crystals formed upon solidification (Figure 4). Note that for lavas with thicknesses lower than  $\sim 10$  m, considering the viscosities for crystal-bearing lavas with a crystallinity equal to or larger than 5% (Figure 4 and Table 3) and for any of the above velocities,  $Re$  is always lower than 2000; in these conditions the laminar regime prevails. For lava thicknesses on the order of 10 m, i.e., maximum thickness considered here, the laminar fluid dynamic regime governs most of the behavior of the flowing lava. However, according to our experimental results, there are cases in which the turbulent regime might still persist, even for partially crystallized systems. In particular,  $Re$  can attain values above 2000 if viscosity is lower than 144 Pa s and flow velocity is larger than 6 m/s. From Figure 4, these viscosity values correspond to partially crystallized systems with crystal contents up to  $\sim 10\%$  for shear rates of  $5 \text{ s}^{-1}$ . Lower shear rates shift  $Re$  toward values lower than 2000, driving the system toward laminar conditions. These considerations highlight that while for some narrow combinations of parameters (i.e., viscosity, velocity, and lava thickness), the lava could potentially flow in turbulent conditions below the liquidus temperature ( $T_L$ ); in most cases it behaves as a laminar system. However, this is contrary to morphological features observed from satellite images and considered to reflect a turbulent emplacement of the lava [Byrne *et al.*, 2013]. These considerations corroborate the idea proposed above that crystallization of lavas is a process that most likely occurred after emplacement.

## 6. Conclusions

The new experiments and modeling presented in this work allow us to shed new light on the mechanisms that determined the emplacement of what is believed to be one of the largest volcanic deposits in the solar system [Byrne *et al.*, 2016], the northern volcanic province on planet Mercury. The high  $\text{Na}_2\text{O}$  content ( $\sim 8.8$  wt %) of the experimental starting material plays an important role in reducing lava viscosity, as confirmed by concentric cylinder high temperature viscosity measurements.

The viscosity of our Mercury analog silicate melt measured at superliquidus temperature conditions slightly increases from 4 to 16 Pa s in the temperature range of 1736–1600 K. In the temperature range of 1569–1502 K (subliquidus), viscosity increases due to the combined effect of progressive crystallization (from 2 to 28 area %) and chemical evolution of the melt. Here a shear-thinning behavior was observed when varying strain rates from 0.1 and  $5 \text{ s}^{-1}$ . Lava viscosity decreases by  $\sim 1$  log unit as shear rate varies from 0.1 and  $5 \text{ s}^{-1}$ .

These new viscosity measurements were used to model the behavior of Mercurian lavas during emplacement. Merging experimental data and numerical modeling leads to the conclusion that the emplacement of lavas in turbulent conditions, as claimed by previous works [e.g., Byrne *et al.*, 2013], defines a geologic scenario in which lavas might have traveled long distances without undergoing strong degrees of crystallization. Therefore, it is possible to infer that solidification (crystallization) of the lavas mostly occurred after emplacement on the surface of the planet. Effusion rates were estimated to be on the order of  $10^4$ – $10^7 \text{ m}^3/\text{s}$ , comparable to those estimated for some Earth's basaltic eruptions forming the LIPs.

## Acknowledgments

This work was funded by the European Research Council for the Consolidator grant ERC-2013-CoG proposal no. 612776—CHRONOS to Diego Perugini. Francesco Vetere acknowledges support from the TESLA FRB-base project from the Department of Physics and Geology, University of Perugia. Olivier Namur acknowledges support from an Individual Intra-European Marie Curie Fellowship (SULFURONMERCURY) and from the DFG through the Emmy Noether Program. Rebecca Astbury is gratefully acknowledged for language corrections. We also wish to thank Nonna Rita for her wise words “adduvi c'è gustu, un c'è pirdenza” that guided us through the writing of this work. Data of experiments are reported in Tables 1–3, in Figures 1–12, and in Tables S1–S4 and Figure S1.

## References

- Armienti, P. (2008), Decryption of igneous rock textures: Crystal size distribution tools, *Rev. Mineral. Geochem.*, *69*, 623–649, doi:10.2138/rmg.2008.69.16.
- Asimow, P. D., J. E. Dixon, and C. H. Langmuir (2004), A hydrous melting and fractionation model for mid-ocean ridge basalts: Application to the Mid-Atlantic Ridge near the Azores, *Geochem. Geophys. Geosyst.*, *5*, 1–24, doi:10.1029/2003GC000568.
- Benkhoff, J., J. van Casteren, H. Hayakawa, M. Fujimoto, H. Laakso, M. Novara, P. Ferri, H. R. Middleton, and R. Ziethe (2010), BepiColombo-comprehensive exploration of Mercury: Mission overview and science goals, *Planet. Space Sci.*, *58*(1–2), 319–326, doi:10.1016/j.pss.2009.09.020.
- Berthet, S., V. Malavergne, and K. Righter (2009), Melting of the Indarch meteorite (EH4 chondrite) at 1 GPa and variable oxygen fugacity: Implications for early planetary differentiation processes, *Geochim. Cosmochim. Acta*, *73*(20), 6402–6420, doi:10.1016/j.gca.2009.07.030.
- Bryan, S. E., I. U. Peate, D. W. Peate, S. Self, D. A. Jerram, M. R. Mawby, J. S. (Goonie) Marsh, and J. A. Miller (2010), The largest volcanic eruptions on Earth, *Earth Sci. Rev.*, *102*(3–4), 207–229, doi:10.1016/j.earscirev.2010.07.001.
- Byrne, P. K., C. Klimczak, D. A. Williams, D. M. Hurwitz, S. C. Solomon, J. W. Head, F. Preusker, and J. Oberst (2013), An assemblage of lava flow features on Mercury, *J. Geophys. Res. Planets*, *118*, 1303–1322, doi:10.1002/jgre.20052.
- Byrne, P. K., L. R. Ostrach, C. I. Fassett, C. R. Chapman, B. W. Denevi, A. J. Evans, C. Klimczak, M. E. Banks, J. W. Head, and S. C. Solomon (2016), Widespread effusive volcanism on Mercury likely ended by about 3.5 Ga, *Geophys. Res. Lett.*, *43*, 7408–7416, doi:10.1002/2016GL069412.
- Cartier, C., T. Hammouda, R. Doucelance, M. Boyet, J.-L. Devidal, and B. Moine (2014), Experimental study of trace element partitioning between enstatite and melt in enstatite chondrites at low oxygen fugacities and 5 GPa, *Geochim. Cosmochim. Acta*, *130*, 167–187, doi:10.1016/j.gca.2014.01.002.
- Charlier, B., T. L. Grove, and M. T. Zuber (2013), Phase equilibria of ultramafic compositions on Mercury and the origin of the compositional dichotomy, *Earth Planet. Sci. Lett.*, *363*, 50–60, doi:10.1016/j.epsl.2012.12.021.

- Davis, M. J., and P. D. Ihinger (1998), Heterogeneous crystal nucleation on bubbles in silicate melt, *Am. Mineral.*, **83**, 1008–1015.
- Denevi, B. W., et al. (2013), The distribution and origin of smooth plains on Mercury, *J. Geophys. Res. Planets*, **118**, 891–907, doi:10.1002/jgre.20075.
- Dingwell, D. B. (1986), Viscosity-temperature relationships in the system  $\text{Na}_2\text{Si}_2\text{O}_5\text{-Na}_4\text{Al}_2\text{O}_5$ , *Geochim. Cosmochim. Acta*, **50**(6), 1261–1265, doi:10.1016/0016-7037(86)90409-6.
- Dowty, E. (1980), Crystal growth and nucleation theory and the numerical simulation of igneous crystallization, in *Physics of Magmatic Processes*, edited by R. B. Hargraves, pp. 419–485, Princeton Univ. Press, New York.
- Einstein, A. (1906), Eine neue Bestimmung der Molekül dimensionen, *Ann. Phys.*, **19**, 289–306.
- Griffiths, R. W. (2000), The dynamics of lava flows, *Annu. Rev. Fluid Mech.*, **32**(1), 477–518, doi:10.1146/annurev.fluid.32.1.477.
- Harris, A. (2013), *Thermal Remote Sensing of Active Volcanoes: A User's Manual*, 756 pp., Cambridge Univ. Press, Cambridge, U. K.
- Harris, A. J. L., and S. K. Rowland (2001), FLOWGO: A kinematic thermo-rheological model for lava flowing in a channel, *Bull. Volcanol.*, **63**, 20–44.
- Hauck, S. A., et al. (2013), The curious case of Mercury's internal structure, *J. Geophys. Res. Planets*, **118**, 1204–1220, doi:10.1002/jgre.20091.
- Head, J. W., et al. (2011), Flood volcanism in the northern high latitudes of Mercury revealed by MESSENGER, *Science*, **333**, 1853–1856.
- Hess, K.-U., D. B. Dingwell, and E. Rössler (1996), Parametrization of viscosity-temperature relations of aluminosilicate melts, *Chem. Geol.*, **128**(1–4), 155–163, doi:10.1016/0009-2541(95)00170-0.
- Hurwitz, D. M., J. W. Head, P. K. Byrne, Z. Xiao, S. C. Solomon, M. T. Zuber, D. E. Smith, and G. A. Neumann (2013), Investigating the origin of candidate lava channels on Mercury with MESSENGER data: Theory and observations, *J. Geophys. Res. Planets*, **118**, 471–486, doi:10.1029/2012JE004103.
- Iezzi, G., S. Mollo, G. Ventura, A. Cavallo, and C. Romano (2008), Experimental solidification of anhydrous latitic and trachytic melts at different cooling rates: The role of nucleation kinetics, *Chem. Geol.*, **253**, 91–101.
- Iezzi, G., S. Mollo, G. Torresi, G. Ventura, A. Cavallo, and P. Scarlato (2011), Experimental solidification of an andesitic melt by cooling, *Chem. Geol.*, **283**, 261–273.
- Ishibashi, H. (2009), Non-Newtonian behavior of plagioclase-bearing basaltic magma: Subliquidus viscosity measurement of the 1707 basalt of Fuji volcano, Japan, *J. Volcanol. Geotherm. Res.*, **181**(1–2), 78–88, doi:10.1016/j.jvolgeores.2009.01.004.
- Ishibashi, H., and H. Sato (2007), Viscosity measurements of subliquidus magmas: Alkali olivine basalt from the Higashi-Matsuura district, Southwest Japan, *J. Volcanol. Geotherm. Res.*, **160**(3–4), 223–238, doi:10.1016/j.jvolgeores.2006.10.001.
- Izenberg, N. R., et al. (2014), The low-iron, reduced surface of Mercury as seen in spectral reflectance by MESSENGER, *Icarus*, **228**, 364–374, doi:10.1016/j.icarus.2013.10.023.
- Keszthelyi, L., and S. Self (1998), Some physical requirements for the emplacement of long basaltic lava flows, *J. Geophys. Res.*, **103**, 27,447–27,464, doi:10.1029/98JB00606.
- Klimczak, C., T. R. Watters, C. M. Ernst, A. M. Freed, P. K. Byrne, S. C. Solomon, D. M. Blair, and J. W. Head (2012), Deformation associated with ghost craters and basins in volcanic smooth plains on Mercury: Strain analysis and implications for plains evolution, *J. Geophys. Res.*, **117**, E00L03, doi:10.1029/2012JE004100.
- Krieger, I., and T. Dougherty (1959), A mechanism for non-Newtonian flow in suspensions of rigid spheres, *Trans. Soc. Rheol.*, **3**, 137–152.
- Lanzafame, G., S. Mollo, G. Iezzi, C. Ferlito, and G. Ventura (2013), Unraveling the solidification path of a pahoehoe “cicirara” lava from Mount Etna volcano, *Bull. Volcanol.*, **75**(4), 1–16, doi:10.1007/s00445-013-0703-8.
- Lofgren, G. E. (1983), Effect of heterogeneous nucleation on basaltic textures: A dynamic crystallization study, *J. Petrol.*, **24**(3), 229–255.
- Le Losq, C., and D. R. Neuville (2013), Effect of the Na/K mixing on the structure and the rheology of tectosilicate silica-rich melts, *Chem. Geol.*, **346**, 57–71, doi:10.1016/j.chemgeo.2012.09.009.
- Mader, H. M., E. W. Llewellyn, and S. P. Mueller (2013), The rheology of two-phase magmas: A review and analysis, *J. Volcanol. Geotherm. Res.*, **257**, 135–158, doi:10.1016/j.jvolgeores.2013.02.014.
- Malavergne, V., M. J. Toplis, S. Berthet, and J. Jones (2010), Highly reducing conditions during core formation on Mercury: Implications for internal structure and the origin of a magnetic field, *Icarus*, **206**(1), 199–209, doi:10.1016/j.icarus.2009.09.001.
- Mazarico, E., A. Genova, S. Goossens, F. G. Lemoine, G. A. Neumann, M. T. Zuber, D. E. Smith, and S. C. Solomon (2014), The gravity field, orientation, and ephemeris of Mercury from MESSENGER observations after three years in orbit, *J. Geophys. Res. Planets*, **119**, 2417–2436, doi:10.1002/2014JE004675.
- McCoy, T. J., T. L. Dickinson, and G. E. Lofgren (1999), Partial melting of the Indarch (EH4) meteorite: A textural, chemical, and phase relations view of melting and melt migration, *Meteorit. Planet. Sci.*, **34**(5), 735–746.
- McCubbin, F. M., M. A. Riner, K. E. Vander Kaaden, and L. K. Burkemper (2012), Is Mercury a volatile-rich planet?, *Geophys. Res. Lett.*, **39**, L09202, doi:10.1029/2012GL051711.
- Morgavi, D., M. Petrelli, F. P. Vetere, D. González-García, and D. Perugini (2015), High-temperature apparatus for chaotic mixing of natural silicate melts, *Rev. Sci. Instrum.*, **86**(10), 105108, doi:10.1063/1.4932610.
- Morizet, Y., S. Ory, I. Di Carlo, B. Scaillet, and P. Echegut (2015), The effect of sulphur on the glass transition temperature in anorthite–diopside eutectic glasses, *Chem. Geol.*, **416**(2015), 11–18.
- Mysen, B., and P. Richet (2005), Iron-bearing melts, in *Silicate Glasses and Melt*, chap. 10, pp. 291–327, Elsevier Sci., Amsterdam, Netherlands.
- Namur, O., and B. Charlier (2017), Silicate mineralogy at the surface of Mercury, *Nat. Geosci.*, **10**, 9–13, doi:10.1038/NGEO2860.
- Namur, O., B. Charlier, F. Holtz, C. Cartier, and C. McCammon (2016a), Sulfur solubility in reduced mafic silicate melts: Implications for the speciation and distribution of sulfur on Mercury, *Earth Planet. Sci. Lett.*, **448**, 102–114.
- Namur, O., M. Collinet, B. Charlier, T. L. Grove, F. Holtz, and C. McCammon (2016b), Melting processes and mantle sources of lavas on Mercury, *Earth Planet. Sci. Lett.*, **439**, 117–128, doi:10.1016/j.epsl.2016.01.030.
- Nittler, L. R., et al. (2011), The major-element composition of Mercury's surface from MESSENGER X-ray spectrometry, *Science*, **333**, 1847–1850, doi:10.1126/science.1211567.
- Ochs, F. A., III, and R. A. Lange (1999), The density of hydrous magmatic liquids, *Science*, **283**, 1314–1317.
- Ostrach, L. R., M. S. Robinson, J. L. Whitten, C. I. Fassett, R. G. Strom, J. W. Head, and S. C. Solomon (2015), Extent, age, and resurfacing history of the northern smooth plains on Mercury from MESSENGER observations, *Icarus*, **250**, 602–622, doi:10.1016/j.icarus.2014.11.010.
- Paige, D. A., S. E. Wood, and A. R. Vasavada (1992), The thermal stability of water ice at the poles of Mercury, *Science*, **258**(5082), 643–646.
- Peplowski, P. N., et al. (2014), Enhanced sodium abundance in Mercury's north polar region revealed by the MESSENGER Gamma-Ray Spectrometer, *Icarus*, **228**, 86–95, doi:10.1016/j.icarus.2013.09.007.
- Peplowski, P. N., et al. (2015), Constraints on the abundance of carbon in near-surface materials on Mercury: Results from the MESSENGER Gamma-ray Spectrometer, *Planet. Space Sci.*, **108**, 3897, 98–107, doi:10.1016/j.pss.2015.01.008.

- Pupier, E., S. Duchene, and M. J. Toplis (2008), Experimental quantification of plagioclase crystal size distribution during cooling of a basaltic liquid, *Contrib. Mineral. Petrol.*, 155(5), 555–570, doi:10.1007/s00410-007-0258-9.
- Roscoe, R. (1952), The viscosity of suspensions of rigid spheres, *J. Appl. Phys.*, 2, 267–269.
- Sato, H. (2005), Viscosity measurement of subliquidus magmas: 1707 basalt of Fuji volcano, *J. Mineral. Petrol. Sci.*, 100(4), 133–142, doi:10.2465/jmps.100.133.
- Sehlke, A., and A. G. Whittington (2015), Rheology of lava flows on Mercury: An analog experimental study, *J. Geophys. Res. Planets*, 120, 1924–1955, doi:10.1002/2015JE004792.
- Sehlke, A., A. Whittington, B. Robert, A. Harris, L. Gurioli, E. Médard, and A. Sehlke (2014), Pahoehe to aa transition of Hawaiian lavas: An experimental study, *Bull. Volcanol.*, 76(11), 876, doi:10.1007/s00445-014-0876-9.
- Smith, P. M., and P. D. Asimow (2005), Adibat\_1ph: A new public front-end to the MELTS, pMELTS, and pHMELTS models, *Geochem. Geophys. Geosyst.*, 6, Q02004, doi:10.1029/2004GC000816.
- Solomon, S. C., et al. (2001), The MESSENGER mission to Mercury: Scientific objectives and implementation, *Planet. Space Sci.*, 49(14–15), 1445–1465, doi:10.1016/S0032-0633(01)00085-X.
- Spina, L., C. Cimarelli, B. Scheu, D. Di Genova, and D. B. Dingwell (2016a), On the slow decompressive response of volatile- and crystal-bearing magmas: An analogue experimental investigation, *Earth Planet. Sci. Lett.*, 433, 44–53, doi:10.1016/j.epsl.2015.10.029.
- Spina, L., B. Scheu, C. Cimarelli, A. Arciniega-Ceballos, and D. B. Dingwell (2016b), Time scales of foam stability in shallow conduits: Insights from analogue experiments, *Geochem. Geophys. Geosyst.*, 17, 4179–4194, doi:10.1002/2016GC006455.
- Stabile, P., S. Webb, J. L. Knipping, H. Behrens, E. Paris, and G. Giuli (2016), Viscosity of pantelleritic and alkali-silicate melts: Effect of Fe redox state and Na/(Na + K) ratio, *Chem. Geol.*, 442, 73–82, doi:10.1016/j.chemgeo.2016.09.003.
- Stockstill-Cahill, K. R., T. J. McCoy, L. R. Nittler, S. Z. Weider, and S. A. Hauck (2012), Magnesium-rich crustal compositions on Mercury: Implications for magmatism from petrologic modeling, *J. Geophys. Res.*, 117, E00L15, doi:10.1029/2012JE004140.
- Strom, R. G. (1977), Origin and relative age of lunar and Mercurian intercrater plains, *Phys. Earth Planet. Inter.*, 15(2–3), 156–172.
- Thomas, R. J., D. A. Rothery, S. J. Conway, and M. Anand (2014), Long-lived explosive volcanism on Mercury, *Geophys. Res. Lett.*, 41, 6084–6092, doi:10.1002/2014GL061224.
- Vander Kaaden, K. E., and F. M. McCubbin (2016), The origin of boninites on Mercury: An experimental study of the northern volcanic plains lavas, *Geochim. Cosmochim. Acta*, 173, 246–263, doi:10.1016/j.gca.2015.10.016.
- Vander Kaaden, K. E., F. M. McCubbin, L. R. Nittler, P. N. Peplowski, S. Z. Weider, E. A. Frank, and T. J. McCoy (2017), Geochemistry, mineralogy, and petrology of boninitic and komatiitic rocks on the mercurian surface: Insights into the mercurian mantle, *Icarus*, 285, 155–168.
- Vasavada, A. R., D. A. Paige, and S. E. Wood, (1999), Near-surface temperatures on Mercury and the Moon and the stability of polar ice deposits, *Icarus*, 141, 179–193.
- Vetere, F., H. Behrens, F. Holtz, G. Vilaro, and G. Ventura (2010), Viscosity of crystal-bearing melts and its implication for magma ascent, *J. Mineral. Petrol. Sci.*, 105(3), 151–163, doi:10.2465/jmps.090402.
- Vetere, F., G. Iezzi, H. Behrens, A. Cavallo, V. Misiti, M. Dietrich, J. Knipping, G. Ventura, and S. Mollo (2013a), Intrinsic solidification behaviour of basaltic to rhyolitic melts: A cooling rate experimental study, *Chem. Geol.*, 354, 233–242, doi:10.1016/j.chemgeo.2013.06.007.
- Vetere, F., H. Sato, H. Ishibashi, R. De Rosa, P. Donato, H. Ishibashi, R. De Rosa, and P. Donato (2013b), Viscosity changes during crystallization of a shoshonitic magma: New insights on lava flow emplacement, *J. Mineral. Petrol. Sci.*, 108(3), 144–160, doi:10.2465/jmps.120724.
- Vetere, F., F. Holtz, H. Behrens, R. E. Botcharnikov, and S. Fanara (2014), The effect of alkalis and polymerization on the solubility of H<sub>2</sub>O and CO<sub>2</sub> in alkali-rich silicate melts, *Contrib. Mineral. Petrol.*, 167(5), 1–17, doi:10.1007/s00410-014-1014-6.
- Vetere, F., G. Iezzi, H. Behrens, F. Holtz, G. Ventura, V. Misiti, A. Cavallo, S. Mollo, and M. Dietrich (2015), Glass forming ability and crystallisation behaviour of sub-alkaline silicate melts, *Earth-Sci. Rev.*, 150, 25–44, doi:10.1016/j.earscirev.2015.07.001.
- Vogel, D. H. (1921), Temperaturabhängigkeitsgesetz der viskosität von flüssigkeiten, *Phys. Z.*, 22, 645–646.
- Vona, A., C. Romano, D. B. Dingwell, and D. Giordano (2011), The rheology of crystal-bearing basaltic magmas from Stromboli and Etna, *Geochim. Cosmochim. Acta*, 75(11), 3214–3236, doi:10.1016/j.gca.2011.03.031.
- Vona, A., C. Romano, D. Giordano, and J. K. Russell (2013), The multiphase rheology of magmas from Monte Nuovo (Campi Flegrei, Italy), *Chem. Geol.*, 346, 213–227, doi:10.1016/j.chemgeo.2012.10.005.
- Weider, S. Z., L. R. Nittler, R. D. Starr, T. J. McCoy, K. R. Stockstill-Cahill, P. K. Byrne, B. W. Denevi, J. W. Head, and S. C. Solomon (2012), Chemical heterogeneity on Mercury's surface revealed by the MESSENGER X-ray Spectrometer, *J. Geophys. Res.*, 117, E00L05, doi:10.1029/2012JE004153.
- Weider, S. Z., et al. (2015), Evidence for geochemical terranes on Mercury: Global mapping of major elements with MESSENGER's X-ray Spectrometer, *Earth Planet. Sci. Lett.*, 416, 109–120.
- Williams, D. A., R. C. Kerr, C. M. Leshner, and S. J. Barnes (2001), Analytical/numerical modeling of komatiite lava emplacement and thermal erosion at perseverance, Western Australia, *J. Volcanol. Geotherm. Res.*, 110(1–2), 27–55, doi:10.1016/S0377-0273(01)00206-2.
- Zolotov, M. Y., A. L. Sprague, S. A. Hauck II, L. R. Nittler, S. C. Solomon, and S. Z. Weider (2013), The redox state, FeO content, and origin of sulfur-rich magmas on Mercury, *J. Geophys. Res. Planets*, 118, 138–146, doi:10.1029/2012JE004274.